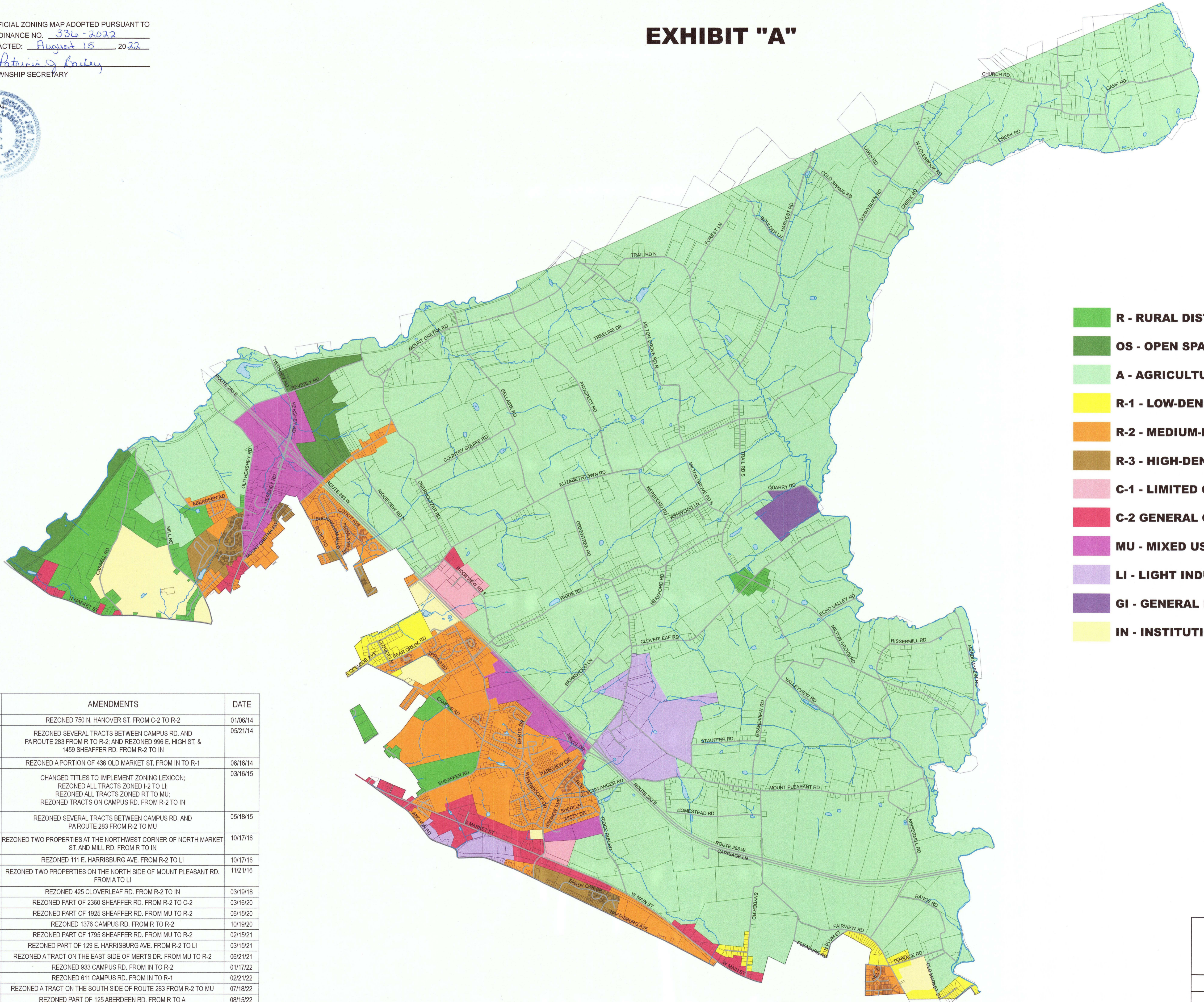
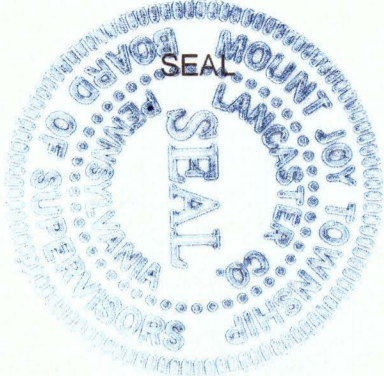


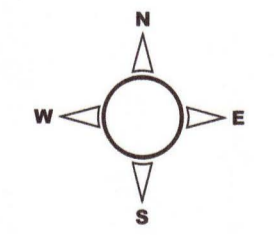
OFFICIAL ZONING MAP ADOPTED PURSUANT TO
 ORDINANCE NO. 336-2022
 ENACTED: August 15 2022
Patricia G. Bailey
 TOWNSHIP SECRETARY

EXHIBIT "A"

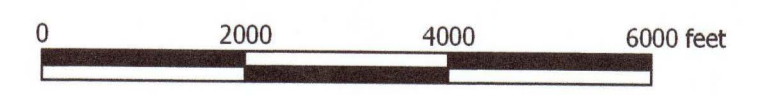


- R - RURAL DISTRICT**
- OS - OPEN SPACE AND CONSERVATION DISTRICT**
- A - AGRICULTURAL DISTRICT**
- R-1 - LOW-DENSITY RESIDENTIAL DISTRICT**
- R-2 - MEDIUM-DENSITY RESIDENTIAL DISTRICT**
- R-3 - HIGH-DENSITY RESIDENTIAL DISTRICT**
- C-1 - LIMITED COMMERCIAL DISTRICT**
- C-2 GENERAL COMMERCIAL DISTRICT**
- MU - MIXED USE DISTRICT**
- LI - LIGHT INDUSTRIAL DISTRICT**
- GI - GENERAL INDUSTRIAL DISTRICT**
- IN - INSTITUTIONAL DISTRICT**

ORDINANCE NUMBER	AMENDMENTS	DATE
284 - 2014	REZONED 750 N. HANOVER ST. FROM C-2 TO R-2	01/06/14
285 - 2014	REZONED SEVERAL TRACTS BETWEEN CAMPUS RD. AND PARROUTE 283 FROM R TO R-2; AND REZONED 996 E. HIGH ST. & 1459 SHEAFFER RD. FROM R-2 TO IN	05/21/14
286 - 2014	REZONED A PORTION OF 436 OLD MARKET ST. FROM IN TO R-1	06/16/14
293 - 2015	CHANGED TITLES TO IMPLEMENT ZONING LEXICON; REZONED ALL TRACTS ZONED I-2 TO LI; REZONED ALL TRACTS ZONED RT TO MU; REZONED TRACTS ON CAMPUS RD. FROM R-2 TO IN	03/16/15
294 - 2015	REZONED SEVERAL TRACTS BETWEEN CAMPUS RD. AND PARROUTE 283 FROM R-2 TO MU	05/18/15
307 - 2016	REZONED TWO PROPERTIES AT THE NORTHWEST CORNER OF NORTH MARKET ST. AND MILL RD. FROM R TO IN	10/17/16
308 - 2016	REZONED 111 E. HARRISBURG AVE. FROM R-2 TO LI	10/17/16
310 - 2016	REZONED TWO PROPERTIES ON THE NORTH SIDE OF MOUNT PLEASANT RD. FROM A TO LI	11/21/16
314 - 2018	REZONED 425 CLOVERLEAF RD. FROM R-2 TO IN	03/19/18
321 - 2020	REZONED PART OF 2360 SHEAFFER RD. FROM R-2 TO C-2	03/16/20
323 - 2020	REZONED PART OF 1925 SHEAFFER RD. FROM MU TO R-2	06/15/20
324 - 2020	REZONED 1376 CAMPUS RD. FROM R TO R-2	10/19/20
326 - 2021	REZONED PART OF 1795 SHEAFFER RD. FROM MU TO R-2	02/15/21
327 - 2021	REZONED PART OF 129 E. HARRISBURG AVE. FROM R-2 TO LI	03/15/21
329 - 2021	REZONED A TRACT ON THE EAST SIDE OF MERTS DR. FROM MU TO R-2	06/21/21
332 - 2022	REZONED 933 CAMPUS RD. FROM IN TO R-2	01/17/22
333 - 2022	REZONED 611 CAMPUS RD. FROM IN TO R-1	02/21/22
334 - 2022	REZONED A TRACT ON THE SOUTH SIDE OF ROUTE 283 FROM R-2 TO MU	07/18/22
336 - 2022	REZONED PART OF 125 ABERDEEN RD. FROM R TO A	08/15/22



SOURCE OF BASE MAPPING: LANCASTER COUNTY GIS DEPARTMENT



MOUNT JOY TOWNSHIP
 8853 ELIZABETHTOWN ROAD
 ELIZABETHTOWN, PA 17022
 (717) 367-8917
 WWW.MTJOYTP.ORG

ZONING MAP

AS AMENDED THROUGH AUGUST 15, 2022