

PROJ. MGR. -	JUB
DESIGN -	TBF
CADD -	TBF
CHECKED -	JUB

NO.	DATE	REVISION

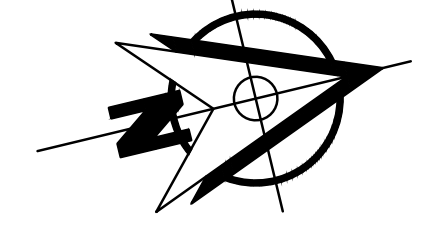
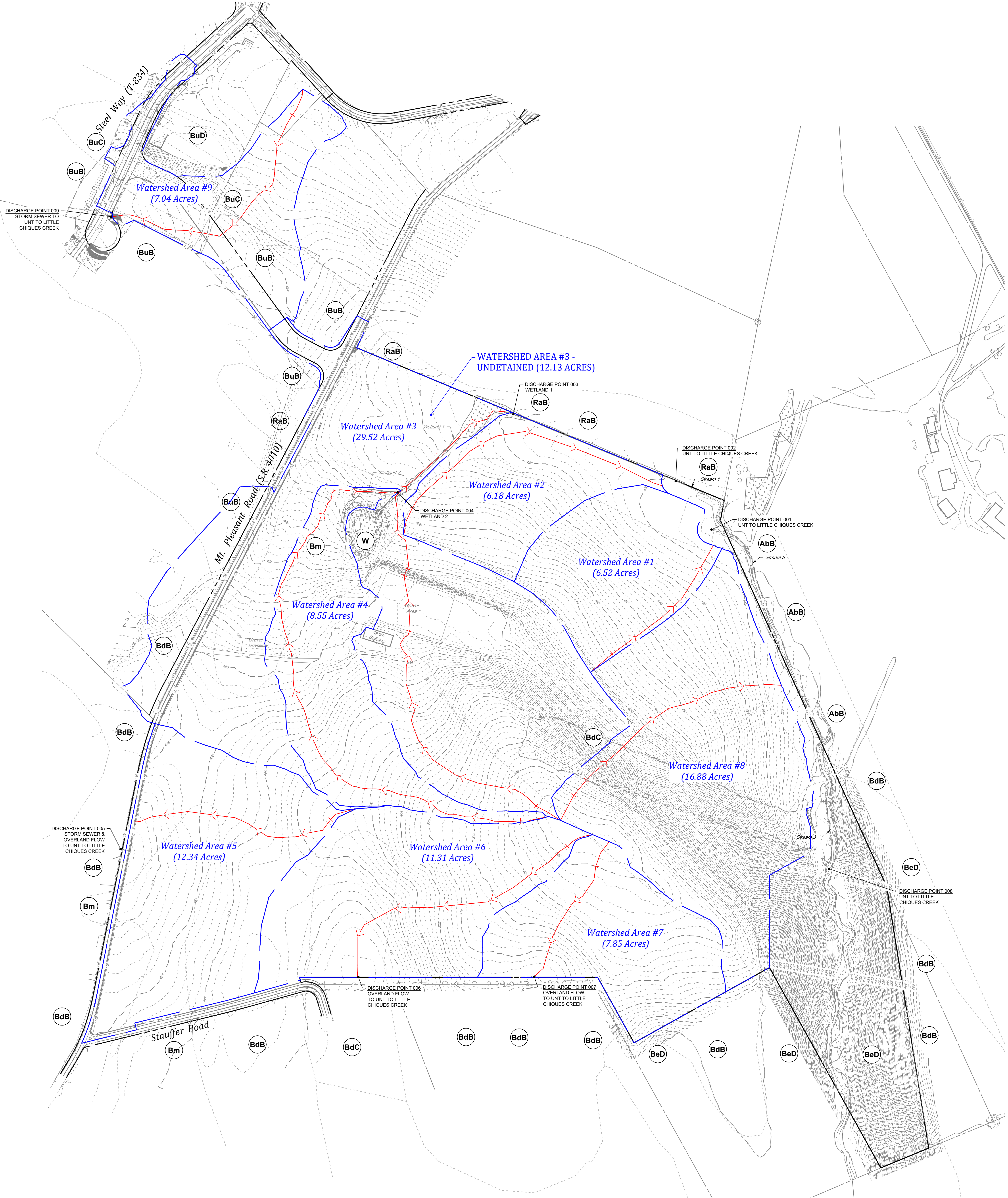
**LANDWORKS**  
 CIVIL DESIGN, LLC  
 land development consultants  
 1145 HUNTERS AVENUE  
 #1727 SUITE 1105  
 WARRINGTON, VA 22090  
 WWW.LANDWORKS.CA



PRE-DEVELOPMENT DRAINAGE AREA EXHIBIT  
 FOR  
**283 COMMERCE CENTER - BUILDING #1**  
 FOR  
 PDC NORTHEAST LP IV, LLC  
 MOUNT JOY TOWNSHIP  
 LANCASTER COUNTY, PENNSYLVANIA

PROJECT NO.  
 22-0123-005  
 DATE: 01/03/23  
 SCALE: 1" = 150'

**DA 1.1**



**LEGEND**

WATERSHED DRAINAGE AREA BOUNDARY: - - - - -

TO PATH AND SEGMENT DIVIDER: —+—

SOIL TYPE DESIGNATION: (BuB)

SOIL TYPE BOUNDARY LINE: - · - · - ·

**SOIL CLASSIFICATION**

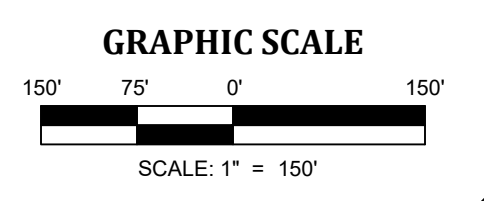
Abb: ABBOTTSTOWN SILT LOAM, 3% TO 8% SLOPES, HSG D  
 BbA: BEDINGTON SILT LOAM, 0% TO 3% SLOPES, HSG B  
 BbB: BEDINGTON SILT LOAM, 3% TO 8% SLOPES, HSG B  
 BbC: BEDINGTON SILT LOAM, 8% TO 15% SLOPES, HSG B  
 BbD: BEDINGTON CHANNERY SILT LOAM, 15% TO 25% SLOPES, HSG B  
 BbE: BLAKTON SILT LOAM, 3% TO 10% SLOPES, HSG C  
 BuB: BUCKS SILT LOAM, 3% TO 8% SLOPES, HSG B  
 BuC: BUCKS SILT LOAM, 8% TO 15% SLOPES, HSG B  
 BuD: BUCKS SILT LOAM, 15% TO 25% SLOPES, HSG B  
 LbD: LANSDALE LOAM, 10% TO 20% SLOPES, HSG B  
 RaB: READINGTON SILT LOAM, 3% TO 8% SLOPES, HSG C  
 W: WATER

**RECEIVING WATER CLASSIFICATION & DESIGNATION**

RECEIVING WATER: UNT TO LITTLE CHIQUES CREEK

EXISTING USE: NONE

DESIGNATED USE: TROUT STOCKED FISHERY, MIGRATORY FISHES (TSF, MF)



PROJ. MGR. - JUB  
 DESIGN - TBF  
 CADD - TBF  
 CHECKED - JUB

NO.	DATE	REVISION

**LANDWORKS**  
 CIVIL DESIGN, LLC  
 land development consultants  
 1145 HUNTERS AVENUE  
 #1727 SUITE 1105  
 WIRE #A 17103  
 WWW.LANDWORKS.COM



POST-DEVELOPMENT DRAINAGE AREA EXHIBIT  
 FOR  
**283 COMMERCE CENTER - BUILDING #1**  
 FOR  
 PDC NORTHEAST LP IV, LLC  
 MOUNT JOY TOWNSHIP  
 LANCASTER COUNTY, PENNSYLVANIA

PROJECT NO.  
 22-0123-005  
 DATE: 01/03/23  
 SCALE: 1" = 150'

**DA 1.2**

**LEGEND**

WATERSHED DRAINAGE AREA BOUNDARY ————

TO PATH AND SEGMENT DIVIDER →

SOIL TYPE DESIGNATION (Soil Code in Circle)

SOIL TYPE BOUNDARY LINE ————

**SOIL CLASSIFICATION**

Abb: ABBOTTSTOWN SILT LOAM, 3% TO 8% SLOPES, HSG D  
 BbA: BEDINGTON SILT LOAM, 0% TO 3% SLOPES, HSG B  
 BbB: BEDINGTON SILT LOAM, 3% TO 8% SLOPES, HSG B  
 BbC: BEDINGTON SILT LOAM, 8% TO 15% SLOPES, HSG B  
 BbD: BEDINGTON CHANNERY SILT LOAM, 15% TO 25% SLOPES, HSG B  
 BbE: BLAKTON SILT LOAM, 3% TO 10% SLOPES, HSG C  
 BbF: BLAKTON SILT LOAM, 10% TO 15% SLOPES, HSG C  
 BbG: BLAKTON SILT LOAM, 15% TO 25% SLOPES, HSG C  
 BbH: BLAKTON SILT LOAM, 25% TO 35% SLOPES, HSG C  
 BbI: BLAKTON SILT LOAM, 35% TO 45% SLOPES, HSG C  
 BbJ: BLAKTON SILT LOAM, 45% TO 55% SLOPES, HSG C  
 BbK: BLAKTON SILT LOAM, 55% TO 65% SLOPES, HSG C  
 BbL: BLAKTON SILT LOAM, 65% TO 75% SLOPES, HSG C  
 BbM: BLAKTON SILT LOAM, 75% TO 85% SLOPES, HSG C  
 BbN: BLAKTON SILT LOAM, 85% TO 95% SLOPES, HSG C  
 BbO: BLAKTON SILT LOAM, 95% TO 100% SLOPES, HSG C  
 BbP: BLAKTON SILT LOAM, 100% TO 110% SLOPES, HSG C  
 BbQ: BLAKTON SILT LOAM, 110% TO 120% SLOPES, HSG C  
 BbR: BLAKTON SILT LOAM, 120% TO 130% SLOPES, HSG C  
 BbS: BLAKTON SILT LOAM, 130% TO 140% SLOPES, HSG C  
 BbT: BLAKTON SILT LOAM, 140% TO 150% SLOPES, HSG C  
 BbU: BLAKTON SILT LOAM, 150% TO 160% SLOPES, HSG C  
 BbV: BLAKTON SILT LOAM, 160% TO 170% SLOPES, HSG C  
 BbW: BLAKTON SILT LOAM, 170% TO 180% SLOPES, HSG C  
 BbX: BLAKTON SILT LOAM, 180% TO 190% SLOPES, HSG C  
 BbY: BLAKTON SILT LOAM, 190% TO 200% SLOPES, HSG C  
 BbZ: BLAKTON SILT LOAM, 200% TO 210% SLOPES, HSG C  
 Bba: BEDINGTON SILT LOAM, 3% TO 8% SLOPES, HSG B  
 Bbb: BEDINGTON SILT LOAM, 8% TO 15% SLOPES, HSG B  
 Bbc: BEDINGTON SILT LOAM, 15% TO 25% SLOPES, HSG B  
 Bbd: BEDINGTON SILT LOAM, 25% TO 35% SLOPES, HSG B  
 Bbe: BEDINGTON SILT LOAM, 35% TO 45% SLOPES, HSG B  
 Bbf: BEDINGTON SILT LOAM, 45% TO 55% SLOPES, HSG B  
 Bbg: BEDINGTON SILT LOAM, 55% TO 65% SLOPES, HSG B  
 Bbh: BEDINGTON SILT LOAM, 65% TO 75% SLOPES, HSG B  
 Bbi: BEDINGTON SILT LOAM, 75% TO 85% SLOPES, HSG B  
 Bbj: BEDINGTON SILT LOAM, 85% TO 95% SLOPES, HSG B  
 Bbk: BEDINGTON SILT LOAM, 95% TO 100% SLOPES, HSG B  
 Bbl: BEDINGTON SILT LOAM, 100% TO 110% SLOPES, HSG B  
 Bbm: BEDINGTON SILT LOAM, 110% TO 120% SLOPES, HSG B  
 Bbn: BEDINGTON SILT LOAM, 120% TO 130% SLOPES, HSG B  
 Bbo: BEDINGTON SILT LOAM, 130% TO 140% SLOPES, HSG B  
 Bbp: BEDINGTON SILT LOAM, 140% TO 150% SLOPES, HSG B  
 Bbq: BEDINGTON SILT LOAM, 150% TO 160% SLOPES, HSG B  
 Bbr: BEDINGTON SILT LOAM, 160% TO 170% SLOPES, HSG B  
 Bbs: BEDINGTON SILT LOAM, 170% TO 180% SLOPES, HSG B  
 Bbt: BEDINGTON SILT LOAM, 180% TO 190% SLOPES, HSG B  
 Bbu: BEDINGTON SILT LOAM, 190% TO 200% SLOPES, HSG B  
 Bbv: BEDINGTON SILT LOAM, 200% TO 210% SLOPES, HSG B  
 Bbw: BEDINGTON SILT LOAM, 210% TO 220% SLOPES, HSG B  
 Bbx: BEDINGTON SILT LOAM, 220% TO 230% SLOPES, HSG B  
 Bby: BEDINGTON SILT LOAM, 230% TO 240% SLOPES, HSG B  
 Bbz: BEDINGTON SILT LOAM, 240% TO 250% SLOPES, HSG B  
 Bca: CUMBERLAND SILT LOAM, 3% TO 8% SLOPES, HSG C  
 Bcb: CUMBERLAND SILT LOAM, 8% TO 15% SLOPES, HSG C  
 Bcc: CUMBERLAND SILT LOAM, 15% TO 25% SLOPES, HSG C  
 Bcd: CUMBERLAND SILT LOAM, 25% TO 35% SLOPES, HSG C  
 Bce: CUMBERLAND SILT LOAM, 35% TO 45% SLOPES, HSG C  
 Bcf: CUMBERLAND SILT LOAM, 45% TO 55% SLOPES, HSG C  
 Bcg: CUMBERLAND SILT LOAM, 55% TO 65% SLOPES, HSG C  
 Bch: CUMBERLAND SILT LOAM, 65% TO 75% SLOPES, HSG C  
 Bci: CUMBERLAND SILT LOAM, 75% TO 85% SLOPES, HSG C  
 Bcj: CUMBERLAND SILT LOAM, 85% TO 95% SLOPES, HSG C  
 Bck: CUMBERLAND SILT LOAM, 95% TO 100% SLOPES, HSG C  
 Bcl: CUMBERLAND SILT LOAM, 100% TO 110% SLOPES, HSG C  
 Bcm: CUMBERLAND SILT LOAM, 110% TO 120% SLOPES, HSG C  
 Bcn: CUMBERLAND SILT LOAM, 120% TO 130% SLOPES, HSG C  
 Bco: CUMBERLAND SILT LOAM, 130% TO 140% SLOPES, HSG C  
 Bcp: CUMBERLAND SILT LOAM, 140% TO 150% SLOPES, HSG C  
 Bcq: CUMBERLAND SILT LOAM, 150% TO 160% SLOPES, HSG C  
 Bcr: CUMBERLAND SILT LOAM, 160% TO 170% SLOPES, HSG C  
 Bcs: CUMBERLAND SILT LOAM, 170% TO 180% SLOPES, HSG C  
 Bct: CUMBERLAND SILT LOAM, 180% TO 190% SLOPES, HSG C  
 Bcu: CUMBERLAND SILT LOAM, 190% TO 200% SLOPES, HSG C  
 Bcv: CUMBERLAND SILT LOAM, 200% TO 210% SLOPES, HSG C  
 Bcw: CUMBERLAND SILT LOAM, 210% TO 220% SLOPES, HSG C  
 Bcx: CUMBERLAND SILT LOAM, 220% TO 230% SLOPES, HSG C  
 Bcy: CUMBERLAND SILT LOAM, 230% TO 240% SLOPES, HSG C  
 Bcz: CUMBERLAND SILT LOAM, 240% TO 250% SLOPES, HSG C  
 Bda: DANBURY SILT LOAM, 3% TO 8% SLOPES, HSG D  
 Bdb: DANBURY SILT LOAM, 8% TO 15% SLOPES, HSG D  
 Bdc: DANBURY SILT LOAM, 15% TO 25% SLOPES, HSG D  
 Bdd: DANBURY SILT LOAM, 25% TO 35% SLOPES, HSG D  
 Bde: DANBURY SILT LOAM, 35% TO 45% SLOPES, HSG D  
 Bdf: DANBURY SILT LOAM, 45% TO 55% SLOPES, HSG D  
 Bdg: DANBURY SILT LOAM, 55% TO 65% SLOPES, HSG D  
 Bdh: DANBURY SILT LOAM, 65% TO 75% SLOPES, HSG D  
 Bdi: DANBURY SILT LOAM, 75% TO 85% SLOPES, HSG D  
 Bdj: DANBURY SILT LOAM, 85% TO 95% SLOPES, HSG D  
 Bdk: DANBURY SILT LOAM, 95% TO 100% SLOPES, HSG D  
 Bdl: DANBURY SILT LOAM, 100% TO 110% SLOPES, HSG D  
 Bdm: DANBURY SILT LOAM, 110% TO 120% SLOPES, HSG D  
 Bdn: DANBURY SILT LOAM, 120% TO 130% SLOPES, HSG D  
 Bdo: DANBURY SILT LOAM, 130% TO 140% SLOPES, HSG D  
 Bdp: DANBURY SILT LOAM, 140% TO 150% SLOPES, HSG D  
 Bdq: DANBURY SILT LOAM, 150% TO 160% SLOPES, HSG D  
 Bdr: DANBURY SILT LOAM, 160% TO 170% SLOPES, HSG D  
 Bds: DANBURY SILT LOAM, 170% TO 180% SLOPES, HSG D  
 Bdt: DANBURY SILT LOAM, 180% TO 190% SLOPES, HSG D  
 Bdu: DANBURY SILT LOAM, 190% TO 200% SLOPES, HSG D  
 Bdv: DANBURY SILT LOAM, 200% TO 210% SLOPES, HSG D  
 Bdw: DANBURY SILT LOAM, 210% TO 220% SLOPES, HSG D  
 Bdx: DANBURY SILT LOAM, 220% TO 230% SLOPES, HSG D  
 Bdy: DANBURY SILT LOAM, 230% TO 240% SLOPES, HSG D  
 Bdz: DANBURY SILT LOAM, 240% TO 250% SLOPES, HSG D  
 Bfa: FALLS GAP SILT LOAM, 3% TO 8% SLOPES, HSG F  
 Bfb: FALLS GAP SILT LOAM, 8% TO 15% SLOPES, HSG F  
 Bfc: FALLS GAP SILT LOAM, 15% TO 25% SLOPES, HSG F  
 Bfd: FALLS GAP SILT LOAM, 25% TO 35% SLOPES, HSG F  
 Bfe: FALLS GAP SILT LOAM, 35% TO 45% SLOPES, HSG F  
 Bff: FALLS GAP SILT LOAM, 45% TO 55% SLOPES, HSG F  
 Bfg: FALLS GAP SILT LOAM, 55% TO 65% SLOPES, HSG F  
 Bfh: FALLS GAP SILT LOAM, 65% TO 75% SLOPES, HSG F  
 Bfi: FALLS GAP SILT LOAM, 75% TO 85% SLOPES, HSG F  
 Bfj: FALLS GAP SILT LOAM, 85% TO 95% SLOPES, HSG F  
 Bfk: FALLS GAP SILT LOAM, 95% TO 100% SLOPES, HSG F  
 Bfl: FALLS GAP SILT LOAM, 100% TO 110% SLOPES, HSG F  
 Bfm: FALLS GAP SILT LOAM, 110% TO 120% SLOPES, HSG F  
 Bfn: FALLS GAP SILT LOAM, 120% TO 130% SLOPES, HSG F  
 Bfo: FALLS GAP SILT LOAM, 130% TO 140% SLOPES, HSG F  
 Bfp: FALLS GAP SILT LOAM, 140% TO 150% SLOPES, HSG F  
 Bfq: FALLS GAP SILT LOAM, 150% TO 160% SLOPES, HSG F  
 Bfr: FALLS GAP SILT LOAM, 160% TO 170% SLOPES, HSG F  
 Bfs: FALLS GAP SILT LOAM, 170% TO 180% SLOPES, HSG F  
 Bft: FALLS GAP SILT LOAM, 180% TO 190% SLOPES, HSG F  
 Bfu: FALLS GAP SILT LOAM, 190% TO 200% SLOPES, HSG F  
 Bfv: FALLS GAP SILT LOAM, 200% TO 210% SLOPES, HSG F  
 Bfw: FALLS GAP SILT LOAM, 210% TO 220% SLOPES, HSG F  
 Bfx: FALLS GAP SILT LOAM, 220% TO 230% SLOPES, HSG F  
 Bfy: FALLS GAP SILT LOAM, 230% TO 240% SLOPES, HSG F  
 Bfz: FALLS GAP SILT LOAM, 240% TO 250% SLOPES, HSG F  
 Bga: GAITHERSBURG SILT LOAM, 3% TO 8% SLOPES, HSG G  
 Bgb: GAITHERSBURG SILT LOAM, 8% TO 15% SLOPES, HSG G  
 Bgc: GAITHERSBURG SILT LOAM, 15% TO 25% SLOPES, HSG G  
 Bgd: GAITHERSBURG SILT LOAM, 25% TO 35% SLOPES, HSG G  
 Bge: GAITHERSBURG SILT LOAM, 35% TO 45% SLOPES, HSG G  
 Bgf: GAITHERSBURG SILT LOAM, 45% TO 55% SLOPES, HSG G  
 Bgg: GAITHERSBURG SILT LOAM, 55% TO 65% SLOPES, HSG G  
 Bgh: GAITHERSBURG SILT LOAM, 65% TO 75% SLOPES, HSG G  
 Bgi: GAITHERSBURG SILT LOAM, 75% TO 85% SLOPES, HSG G  
 Bgj: GAITHERSBURG SILT LOAM, 85% TO 95% SLOPES, HSG G  
 Bgk: GAITHERSBURG SILT LOAM, 95% TO 100% SLOPES, HSG G  
 Bgl: GAITHERSBURG SILT LOAM, 100% TO 110% SLOPES, HSG G  
 Bgm: GAITHERSBURG SILT LOAM, 110% TO 120% SLOPES, HSG G  
 Bgn: GAITHERSBURG SILT LOAM, 120% TO 130% SLOPES, HSG G  
 Bgo: GAITHERSBURG SILT LOAM, 130% TO 140% SLOPES, HSG G  
 Bgp: GAITHERSBURG SILT LOAM, 140% TO 150% SLOPES, HSG G  
 Bgq: GAITHERSBURG SILT LOAM, 150% TO 160% SLOPES, HSG G  
 Bgr: GAITHERSBURG SILT LOAM, 160% TO 170% SLOPES, HSG G  
 Bgs: GAITHERSBURG SILT LOAM, 170% TO 180% SLOPES, HSG G  
 Bgt: GAITHERSBURG SILT LOAM, 180% TO 190% SLOPES, HSG G  
 Bgu: GAITHERSBURG SILT LOAM, 190% TO 200% SLOPES, HSG G  
 Bgv: GAITHERSBURG SILT LOAM, 200% TO 210% SLOPES, HSG G  
 Bgw: GAITHERSBURG SILT LOAM, 210% TO 220% SLOPES, HSG G  
 Bgx: GAITHERSBURG SILT LOAM, 220% TO 230% SLOPES, HSG G  
 Bgy: GAITHERSBURG SILT LOAM, 230% TO 240% SLOPES, HSG G  
 Bgz: GAITHERSBURG SILT LOAM, 240% TO 250% SLOPES, HSG G  
 Bha: HUNTERS CREEK SILT LOAM, 3% TO 8% SLOPES, HSG H  
 Bhb: HUNTERS CREEK SILT LOAM, 8% TO 15% SLOPES, HSG H  
 Bhc: HUNTERS CREEK SILT LOAM, 15% TO 25% SLOPES, HSG H  
 Bhd: HUNTERS CREEK SILT LOAM, 25% TO 35% SLOPES, HSG H  
 Bhe: HUNTERS CREEK SILT LOAM, 35% TO 45% SLOPES, HSG H  
 Bhf: HUNTERS CREEK SILT LOAM, 45% TO 55% SLOPES, HSG H  
 Bhg: HUNTERS CREEK SILT LOAM, 55% TO 65% SLOPES, HSG H  
 Bhh: HUNTERS CREEK SILT LOAM, 65% TO 75% SLOPES, HSG H  
 Bhi: HUNTERS CREEK SILT LOAM, 75% TO 85% SLOPES, HSG H  
 Bhj: HUNTERS CREEK SILT LOAM, 85% TO 95% SLOPES, HSG H  
 Bhk: HUNTERS CREEK SILT LOAM, 95% TO 100% SLOPES, HSG H  
 BhL: HUNTERS CREEK SILT LOAM, 100% TO 110% SLOPES, HSG H  
 Bhm: HUNTERS CREEK SILT LOAM, 110% TO 120% SLOPES, HSG H  
 Bhn: HUNTERS CREEK SILT LOAM, 120% TO 130% SLOPES, HSG H  
 Bho: HUNTERS CREEK SILT LOAM, 130% TO 140% SLOPES, HSG H  
 Bhp: HUNTERS CREEK SILT LOAM, 140% TO 150% SLOPES, HSG H  
 Bhq: HUNTERS CREEK SILT LOAM, 150% TO 160% SLOPES, HSG H  
 Bhr: HUNTERS CREEK SILT LOAM, 160% TO 170% SLOPES, HSG H  
 Bhs: HUNTERS CREEK SILT LOAM, 170% TO 180% SLOPES, HSG H  
 Bht: HUNTERS CREEK SILT LOAM, 180% TO 190% SLOPES, HSG H  
 Bhu: HUNTERS CREEK SILT LOAM, 190% TO 200% SLOPES, HSG H  
 Bhv: HUNTERS CREEK SILT LOAM, 200% TO 210% SLOPES, HSG H  
 Bhw: HUNTERS CREEK SILT LOAM, 210% TO 220% SLOPES, HSG H  
 Bhx: HUNTERS CREEK SILT LOAM, 220% TO 230% SLOPES, HSG H  
 Bhy: HUNTERS CREEK SILT LOAM, 230% TO 240% SLOPES, HSG H  
 Bhz: HUNTERS CREEK SILT LOAM, 240% TO 250% SLOPES, HSG H  
 Bja: JACOBS CREEK SILT LOAM, 3% TO 8% SLOPES, HSG J  
 Bjb: JACOBS CREEK SILT LOAM, 8% TO 15% SLOPES, HSG J  
 Bjc: JACOBS CREEK SILT LOAM, 15% TO 25% SLOPES, HSG J  
 Bjd: JACOBS CREEK SILT LOAM, 25% TO 35% SLOPES, HSG J  
 Bje: JACOBS CREEK SILT LOAM, 35% TO 45% SLOPES, HSG J  
 Bjf: JACOBS CREEK SILT LOAM, 45% TO 55% SLOPES, HSG J  
 Bjj: JACOBS CREEK SILT LOAM, 55% TO 65% SLOPES, HSG J  
 Bjk: JACOBS CREEK SILT LOAM, 65% TO 75% SLOPES, HSG J  
 Bjl: JACOBS CREEK SILT LOAM, 75% TO 85% SLOPES, HSG J  
 Bjm: JACOBS CREEK SILT LOAM, 85% TO 95% SLOPES, HSG J  
 Bjn: JACOBS CREEK SILT LOAM, 95% TO 100% SLOPES, HSG J  
 Bjo: JACOBS CREEK SILT LOAM, 100% TO 110% SLOPES, HSG J  
 Bjp: JACOBS CREEK SILT LOAM, 110% TO 120% SLOPES, HSG J  
 Bjq: JACOBS CREEK SILT LOAM, 120% TO 130% SLOPES, HSG J  
 Bjr: JACOBS CREEK SILT LOAM, 130% TO 140% SLOPES, HSG J  
 Bjs: JACOBS CREEK SILT LOAM, 140% TO 150% SLOPES, HSG J  
 Bjt: JACOBS CREEK SILT LOAM, 150% TO 160% SLOPES, HSG J  
 Bju: JACOBS CREEK SILT LOAM, 160% TO 170% SLOPES, HSG J  
 Bjv: JACOBS CREEK SILT LOAM, 170% TO 180% SLOPES, HSG J  
 Bjw: JACOBS CREEK SILT LOAM, 180% TO 190% SLOPES, HSG J  
 Bjx: JACOBS CREEK SILT LOAM, 190% TO 200% SLOPES, HSG J  
 Bjy: JACOBS CREEK SILT LOAM, 200% TO 210% SLOPES, HSG J  
 Bjz: JACOBS CREEK SILT LOAM, 210% TO 220% SLOPES, HSG J  
 Bka: KEESPORT SILT LOAM, 3% TO 8% SLOPES, HSG K  
 Bkb: KEESPORT SILT LOAM, 8% TO 15% SLOPES, HSG K  
 Bkc: KEESPORT SILT LOAM, 15% TO 25% SLOPES, HSG K  
 Bkd: KEESPORT SILT LOAM, 25% TO 35% SLOPES, HSG K  
 Bke: KEESPORT SILT LOAM, 35% TO 45% SLOPES, HSG K  
 Bkf: KEESPORT SILT LOAM, 45% TO 55% SLOPES, HSG K  
 Bkg: KEESPORT SILT LOAM, 55% TO 65% SLOPES, HSG K  
 Bkh: KEESPORT SILT LOAM, 65% TO 75% SLOPES, HSG K  
 Bki: KEESPORT SILT LOAM, 75% TO 85% SLOPES, HSG K  
 Bkj: KEESPORT SILT LOAM, 85% TO 95% SLOPES, HSG K  
 Bkl: KEESPORT SILT LOAM, 95% TO 100% SLOPES, HSG K  
 Bkm: KEESPORT SILT LOAM, 100% TO 110% SLOPES, HSG K  
 Bkn: KEESPORT SILT LOAM, 110% TO 120% SLOPES, HSG K  
 Bko: KEESPORT SILT LOAM, 120% TO 130% SLOPES, HSG K  
 Bkp: KEESPORT SILT LOAM, 130% TO 140% SLOPES, HSG K  
 Bkq: KEESPORT SILT LOAM, 140% TO 150% SLOPES, HSG K  
 Bkr: KEESPORT SILT LOAM, 150% TO 160% SLOPES, HSG K  
 Bks: KEESPORT SILT LOAM, 160% TO 170% SLOPES, HSG K  
 Bkt: KEESPORT SILT LOAM, 170% TO 180% SLOPES, HSG K  
 Bku: KEESPORT SILT LOAM, 180% TO 190% SLOPES, HSG K  
 Bkv: KEESPORT SILT LOAM, 190% TO 200% SLOPES, HSG K  
 Bkw: KEESPORT SILT LOAM, 200% TO 210% SLOPES, HSG K  
 Bkx: KEESPORT SILT LOAM, 210% TO 220% SLOPES, HSG K  
 Bky: KEESPORT SILT LOAM, 220% TO 230% SLOPES, HSG K  
 Bkz: KEESPORT SILT LOAM, 230% TO 240% SLOPES, HSG K  
 BLa: LANSDALE SILT LOAM, 3% TO 8% SLOPES, HSG L  
 BLB: LANSDALE SILT LOAM, 8% TO 15% SLOPES, HSG L  
 BLc: LANSDALE SILT LOAM, 15% TO 25% SLOPES, HSG L  
 BLd: LANSDALE SILT LOAM, 25% TO 35% SLOPES, HSG L  
 BLE: LANSDALE SILT LOAM, 35% TO 45% SLOPES, HSG L  
 BLF: LANSDALE SILT LOAM, 45% TO 55% SLOPES, HSG L  
 BLG: LANSDALE SILT LOAM, 55% TO 65% SLOPES, HSG L  
 BLH: LANSDALE SILT LOAM, 65% TO 75% SLOPES, HSG L  
 BLI: LANSDALE SILT LOAM, 75% TO 85% SLOPES, HSG L  
 BLJ: LANSDALE SILT LOAM, 85% TO 95% SLOPES, HSG L  
 BLK: LANSDALE SILT LOAM, 95% TO 100% SLOPES, HSG L  
 BLL: LANSDALE SILT LOAM, 100% TO 110% SLOPES, HSG L  
 BLm: LANSDALE SILT LOAM, 110% TO 120% SLOPES, HSG L  
 BLn: LANSDALE SILT LOAM, 120% TO 130% SLOPES, HSG L  
 BLo: LANSDALE SILT LOAM, 130% TO 140% SLOPES, HSG L  
 BLp: LANSDALE SILT LOAM, 140% TO 150% SLOPES, HSG L  
 BLq: LANSDALE SILT LOAM, 150% TO 160% SLOPES, HSG L  
 BLr: LANSDALE SILT LOAM, 160% TO 170% SLOPES, HSG L  
 BLS: LANSDALE SILT LOAM, 170% TO 180% SLOPES, HSG L  
 BLt: LANSDALE SILT LOAM, 180% TO 190% SLOPES, HSG L  
 BLu: LANSDALE SILT LOAM, 190% TO 200% SLOPES, HSG L  
 BLv: LANSDALE SILT LOAM, 200% TO 210% SLOPES, HSG L  
 BLw: LANSDALE SILT LOAM, 210% TO 220% SLOPES, HSG L  
 BLx: LANSDALE SILT LOAM, 220% TO 230% SLOPES, HSG L  
 BLy: LANSDALE SILT LOAM, 230% TO 240% SLOPES, HSG L  
 BLz: LANSDALE SILT LOAM, 240% TO 250% SLOPES, HSG L  
 BMa: MANTON SILT LOAM, 3% TO 8% SLOPES, HSG M  
 BmB: MANTON SILT LOAM, 8% TO 15% SLOPES, HSG M  
 BmC: MANTON SILT LOAM, 15% TO 25% SLOPES, HSG M  
 BmD: MANTON SILT LOAM, 25% TO 35% SLOPES, HSG M  
 BmE: MANTON SILT LOAM, 35% TO 45% SLOPES, HSG M  
 BmF: MANTON SILT LOAM, 45% TO 55% SLOPES, HSG M  
 BmG: MANTON SILT LOAM, 55% TO 65% SLOPES, HSG M  
 BmH: MANTON SILT LOAM, 65% TO 75% SLOPES, HSG M  
 BmI: MANTON SILT LOAM, 75% TO 85% SLOPES, HSG M  
 BmJ: MANTON SILT LOAM, 85% TO 95% SLOPES, HSG M  
 BmK: MANTON SILT LOAM, 95% TO 100% SLOPES, HSG M  
 BmL: MANTON SILT LOAM, 100% TO 110% SLOPES, HSG M  
 BmM: MANTON SILT LOAM, 110% TO 120% SLOPES, HSG M  
 BmN: MANTON SILT LOAM, 120% TO 130% SLOPES, HSG M  
 BmO: MANTON SILT LOAM, 130% TO 140% SLOPES, HSG M  
 BmP: MANTON SILT LOAM, 140% TO 150% SLOPES, HSG M  
 Bmq: MANTON SILT LOAM, 150% TO 160% SLOPES, HSG M  
 Bmr: MANTON SILT LOAM, 160% TO 170% SLOPES, HSG M  
 Bms: MANTON SILT LOAM, 170% TO 180% SLOPES, HSG M  
 Bmt: MANTON SILT LOAM, 180% TO 190% SLOPES, HSG M  
 Bmu: MANTON SILT LOAM, 190% TO 200% SLOPES, HSG M  
 Bmv: MANTON SILT LOAM, 200% TO 210% SLOPES, HSG M  
 Bmw: MANTON SILT LOAM, 210% TO 220% SLOPES, HSG M  
 Bmx: MANTON SILT LOAM, 220% TO 230% SLOPES, HSG M  
 Bmy: MANTON SILT LOAM, 230% TO 240% SLOPES, HSG M  
 Bmz: MANTON SILT LOAM, 240% TO 250% SLOPES, HSG M  
 BNa: NEWBURGH SILT LOAM, 3% TO 8% SLOPES, HSG N  
 BnB: NEWBURGH SILT LOAM, 8% TO 15% SLOPES, HSG N  
 BnC: NEWBURGH SILT LOAM, 15% TO 25% SLOPES, HSG N  
 BnD: NEWBURGH SILT LOAM, 25% TO 35% SLOPES, HSG N  
 BnE: NEWBURGH SILT LOAM, 35% TO 45% SLOPES, HSG N  
 BnF: NEWBURGH SILT LOAM, 45% TO 55% SLOPES, HSG N  
 BnG: NEWBURGH SILT LOAM, 55% TO 65% SLOPES, HSG N  
 BnH: NEWBURGH SILT LOAM, 65% TO 75% SLOPES, HSG N  
 BnI: NEWBURGH SILT LOAM, 75% TO 85% SLOPES, HSG N  
 BnJ: NEWBURGH SILT LOAM, 85% TO 95% SLOPES, HSG N  
 BnK: NEWBURGH SILT LOAM, 95% TO 100% SLOPES, HSG N  
 BnL: NEWBURGH SILT LOAM, 100% TO 110% SLOPES, HSG N  
 BnM: NEWBURGH SILT LOAM, 110% TO 120% SLOPES, HSG N  
 BnN: NEWBURGH SILT LOAM, 120% TO 130% SLOPES, HSG N  
 BnO: NEWBURGH SILT LOAM, 130% TO 140% SLOPES, HSG N  
 BnP: NEWBURGH SILT LOAM, 140% TO 150% SLOPES, HSG N  
 Bnq: NEWBURGH SILT LOAM, 150% TO 160% SLOPES, HSG N  
 Bnr: NEWBURGH SILT LOAM, 160% TO 170% SLOPES, HSG N  
 Bns: NEWBURGH SILT LOAM, 170% TO 180% SLOPES, HSG N  
 Bnt: NEWBURGH SILT LOAM, 180% TO 190% SLOPES, HSG N  
 Bnu: NEWBURGH SILT LOAM, 190% TO 200% SLOPES, HSG N  
 Bnv: NEWBURGH SILT LOAM, 200% TO 210% SLOPES, HSG N  
 Bnw: NEWBURGH SILT LOAM, 210% TO 220% SLOPES, HSG N  
 Bnx: NEWBURGH SILT LOAM, 220% TO 230% SLOPES, HSG N  
 Bny: NEWBURGH SILT LOAM, 230% TO 240% SLOPES, HSG N  
 Bnz: NEWBURGH SILT LOAM, 240% TO 250% SLOPES, HSG N  
 BOa: OAKLAND SILT LOAM, 3% TO 8% SLOPES, HSG O  
 BOB: OAKLAND SILT LOAM, 8% TO 15% SLOPES, HSG O  
 BOc: OAKLAND SILT LOAM, 15% TO 25% SLOPES, HSG O  
 BOd: OAKLAND SILT LOAM, 25% TO 35% SLOPES, HSG O  
 BOE: OAKLAND SILT LOAM, 35% TO 45% SLOPES, HSG O  
 BOF: OAKLAND SILT LOAM, 45% TO 55% SLOPES, HSG O  
 BOG: OAKLAND SILT LOAM, 55% TO 65% SLOPES, HSG O  
 BOH: OAKLAND SILT LOAM, 65% TO 75% SLOPES, HSG O  
 BOI: OAKLAND SILT LOAM, 75% TO 85% SLOPES, HSG O  
 BOJ: OAKLAND SILT LOAM, 85% TO 95% SLOPES, HSG O  
 BOK: OAKLAND SILT LOAM, 95% TO 100% SLOPES, HSG O  
 BOL: OAKLAND SILT LOAM, 100% TO 110% SLOPES, HSG O  
 BOM: OAKLAND SILT LOAM, 110% TO 120% SLOPES, HSG O  
 BON: OAKLAND SILT LOAM, 120% TO 130% SLOPES, HSG O  
 BOO: OAKLAND SILT LOAM, 130% TO 140% SLOPES, HSG O  
 BOP: OAKLAND SILT LOAM, 140% TO 150% SLOPES, HSG O  
 BOq: OAKLAND SILT LOAM, 150% TO 160% SLOPES, HSG O  
 BOr: OAKLAND SILT LOAM, 160% TO 170% SLOPES, HSG O  
 BOs: OAKLAND SILT LOAM, 170% TO 180% SLOPES, HSG O  
 BOt: OAKLAND SILT LOAM, 180% TO 190% SLOPES, HSG O  
 BOu: OAKLAND SILT LOAM, 190% TO 200% SLOPES, HSG O  
 BOv: OAKLAND SILT LOAM, 200% TO 210% SLOPES, HSG O  
 BOW: OAKLAND

PROJ. MGR.	JUB
DESIGN.	TBF
CADD.	TBF
CHECKED.	JUB

**LANDWORKS**  
 CIVIL DESIGN, LLC  
 land development consultants

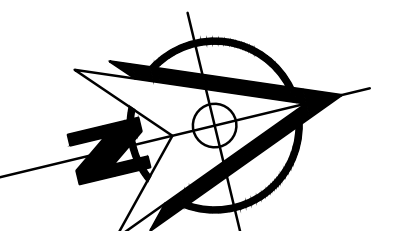
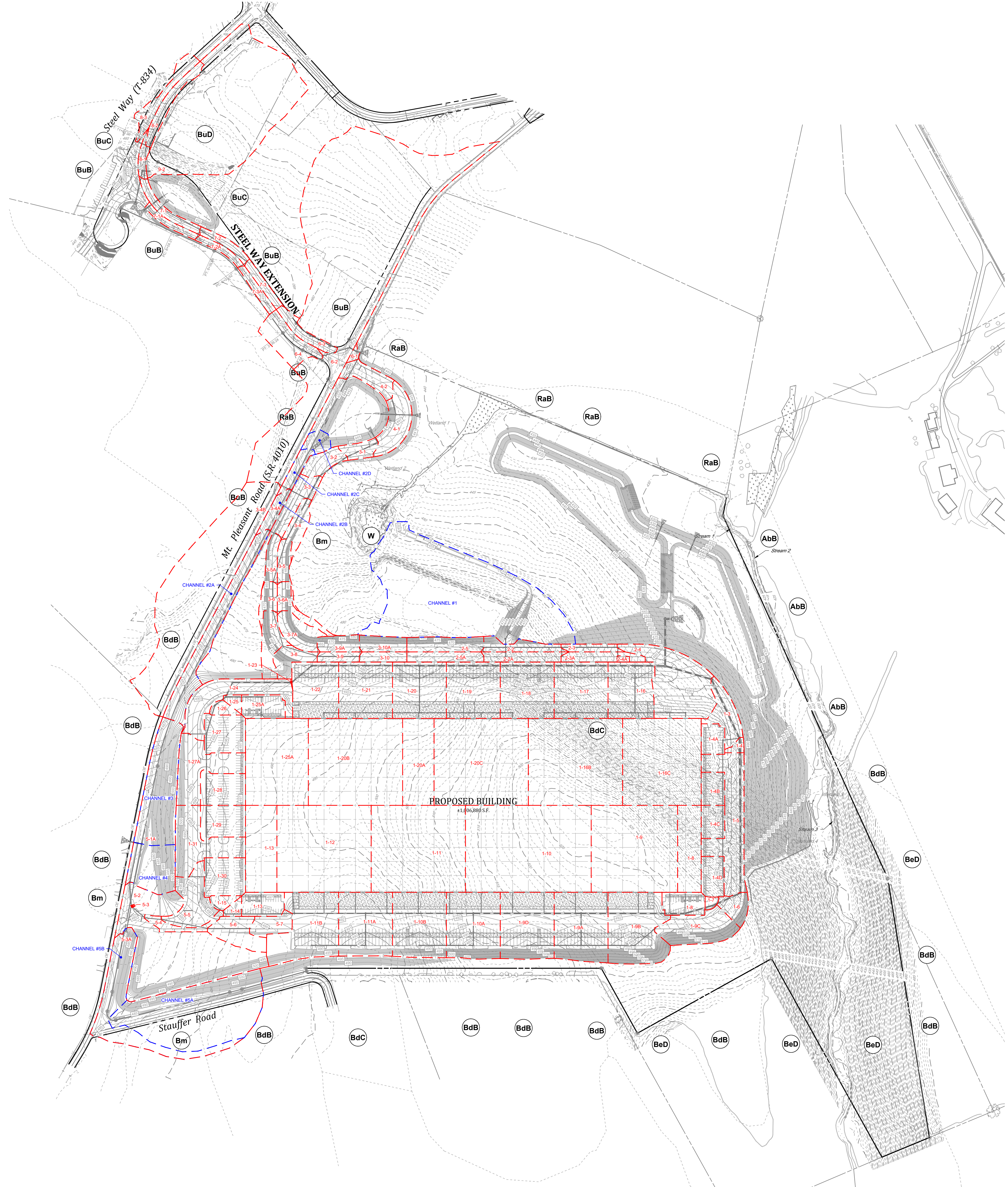
1105 HUNSMAN AVENUE  
 #1717 SUITE 1105  
 WISCONSIN, PA 17143  
 WWW.LANDWORKS.COM



INLET & CHANNEL DRAINAGE AREA EXHIBIT  
 FOR  
**283 COMMERCE CENTER - BUILDING #1**  
 FOR  
 PDC NORTHEAST LP, LLC  
 MOUNT JOY TOWNSHIP  
 LANCASTER COUNTY, PENNSYLVANIA

PROJECT NO.  
 22-0123-005  
 DATE: 01/03/23  
 SCALE: 1" = 150'

**DA 1.3**



**LEGEND**

INLET DRAINAGE AREA BOUNDARY

CHANNEL DRAINAGE AREA BOUNDARY

TO PATH AND SEGMENT DIVIDER

SOIL TYPE DESIGNATION

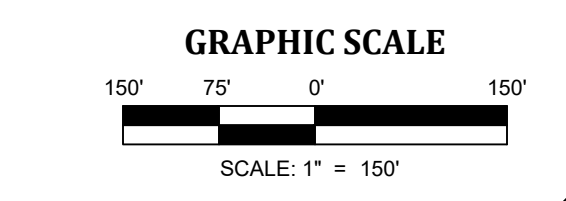
SOIL TYPE BOUNDARY LINE

**SOIL CLASSIFICATION**

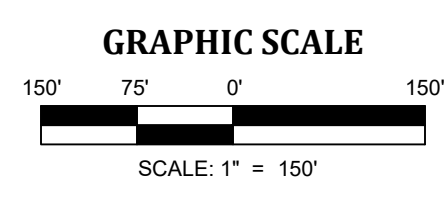
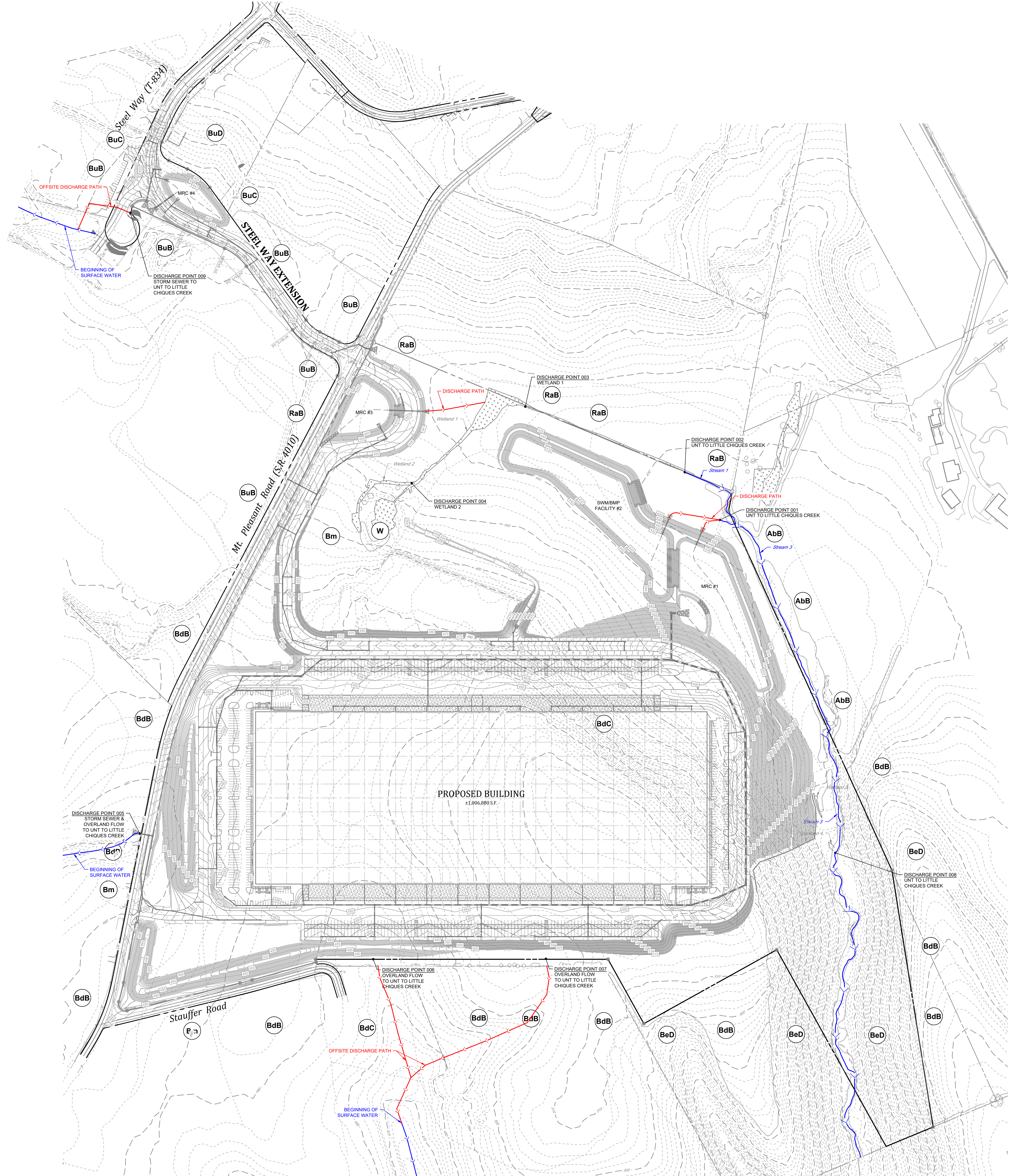
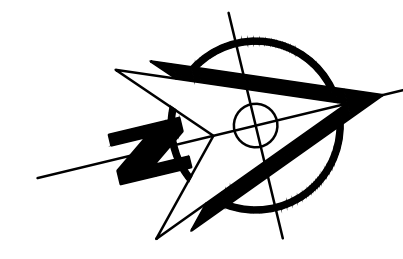
Abb: ABBOTTSTOWN SILT LOAM, 3% TO 8% SLOPES, HSG D  
 BbA: BEDINGTON SILT LOAM, 0% TO 3% SLOPES, HSG B  
 BbB: BEDINGTON SILT LOAM, 3% TO 8% SLOPES, HSG B  
 BbC: BEDINGTON SILT LOAM, 8% TO 15% SLOPES, HSG B  
 BbD: BEDINGTON CHANNELLY SILT LOAM, 15% TO 25% SLOPES, HSG B  
 BbE: BLARLTON SILT LOAM, 3% TO 10% SLOPES, HSG C  
 BbF: BLARLTON SILT LOAM, 10% TO 15% SLOPES, HSG B  
 BbG: BUCKS SILT LOAM, 3% TO 8% SLOPES, HSG B  
 BbC: BUCKS SILT LOAM, 8% TO 15% SLOPES, HSG B  
 BbD: BUCKS SILT LOAM, 15% TO 25% SLOPES, HSG B  
 LbD: LANSDALE LOAM, 15% TO 25% SLOPES, HSG B  
 RaB: READINGTON SILT LOAM, 3% TO 8% SLOPES, HSG C  
 W: WATER

**RECEIVING WATER CLASSIFICATION & DESIGNATION**

RECEIVING WATER: UNT TO LITTLE CHOCQUES CREEK  
 EXISTING USE: NONE  
 DESIGNATED USE: TROUT STOCKED FISHERY, MIGRATORY FISHES (TSF, MF)



ALL INFORMATION IS FOR INFORMATIONAL PURPOSES ONLY. THIS PLAN IS THE PROPERTY OF LANDWORKS CIVIL DESIGN, LLC. IT IS TO BE USED ONLY FOR THE PROJECT AND SITE SPECIFICALLY IDENTIFIED HEREON. NO PART OF THIS PLAN IS TO BE REPRODUCED OR TRANSMITTED IN ANY FORM OR BY ANY MEANS, ELECTRONIC, MECHANICAL, OR ANY INFORMATION STORAGE AND RETRIEVAL SYSTEM, WITHOUT THE EXPRESS WRITTEN PERMISSION OF LANDWORKS CIVIL DESIGN, LLC.



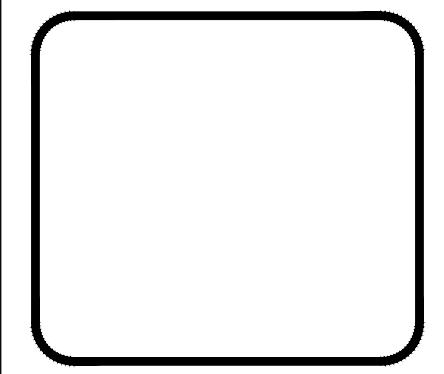
ALL RIGHTS RESERVED. NO PART OF THIS DOCUMENT IS TO BE REPRODUCED OR TRANSMITTED IN ANY FORM OR BY ANY MEANS, WITHOUT THE WRITTEN PERMISSION OF THE DESIGNER. THE DESIGNER'S LIABILITY IS LIMITED TO THE PROFESSIONAL SERVICES PROVIDED HEREIN. THE CLIENT IS RESPONSIBLE FOR OBTAINING ALL NECESSARY PERMITS AND APPROVALS FROM THE APPROPRIATE AGENCIES. THE DESIGNER DOES NOT WARRANT OR REPRESENT THAT THE INFORMATION PROVIDED HEREIN IS COMPLETE, ACCURATE, OR CURRENT. THE DESIGNER'S LIABILITY IS LIMITED TO THE PROFESSIONAL SERVICES PROVIDED HEREIN.

PROJ. MGR. - JUB
DESIGN - TBF
CADD - TBF
CHECKED - JUB

NO.	DATE	REVISION

**LANDWORKS**  
 CIVIL DESIGN, LLC  
 land development consultants

1405 HUNTERS AVENUE  
 #1737, DRUM HILLS, PA 19024  
 WWW.LANDWORKS.COM



OFFSITE DISCHARGE EXHIBIT  
 FOR  
**283 COMMERCE CENTER - BUILDING #1**  
 FOR  
 PDC NORTHEAST LP IV, LLC  
 MOUNT JOY TOWNSHIP  
 LANCASTER COUNTY, PENNSYLVANIA

PROJECT NO. 22-0123-005
DATE: 01/03/23
SCALE: 1" = 150'

**DA 2.0**