



Earth View 3D

(71,222 unread) - sollenberger

3dearthview.net/earth/?gcid=CiwKCAIAzpb6ebhBvEwa_ggq50Ushquj3k_1tURwXtTAqrz4RBqQLXYOWT18rDChm24LLpPqFhooTduQAND_BWE#

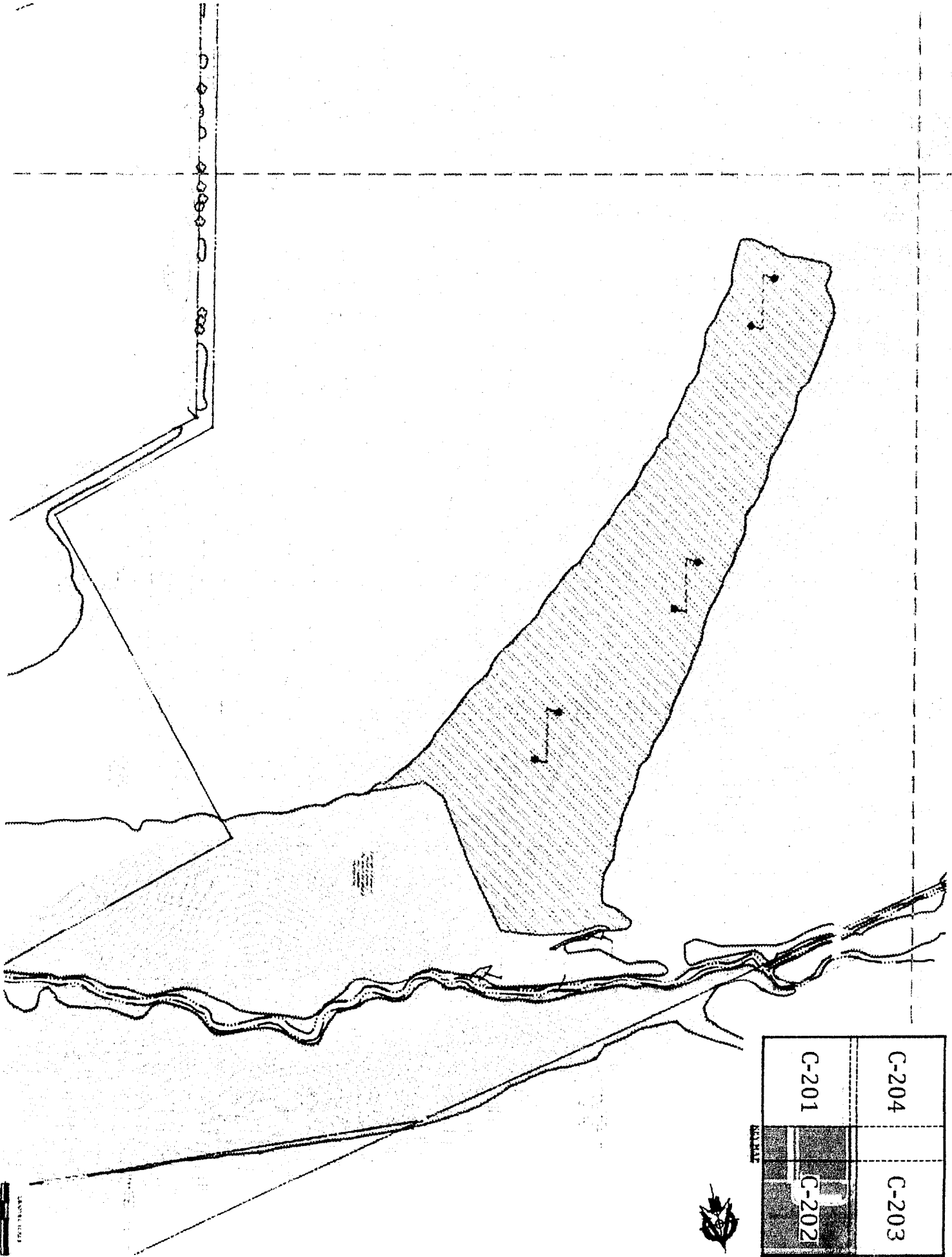



Jan 18 2:06

P. Allen Sollenberger
1437 Grandview Rd.
Mount Joy, PA 17552

Sollenberger
V3 39.23

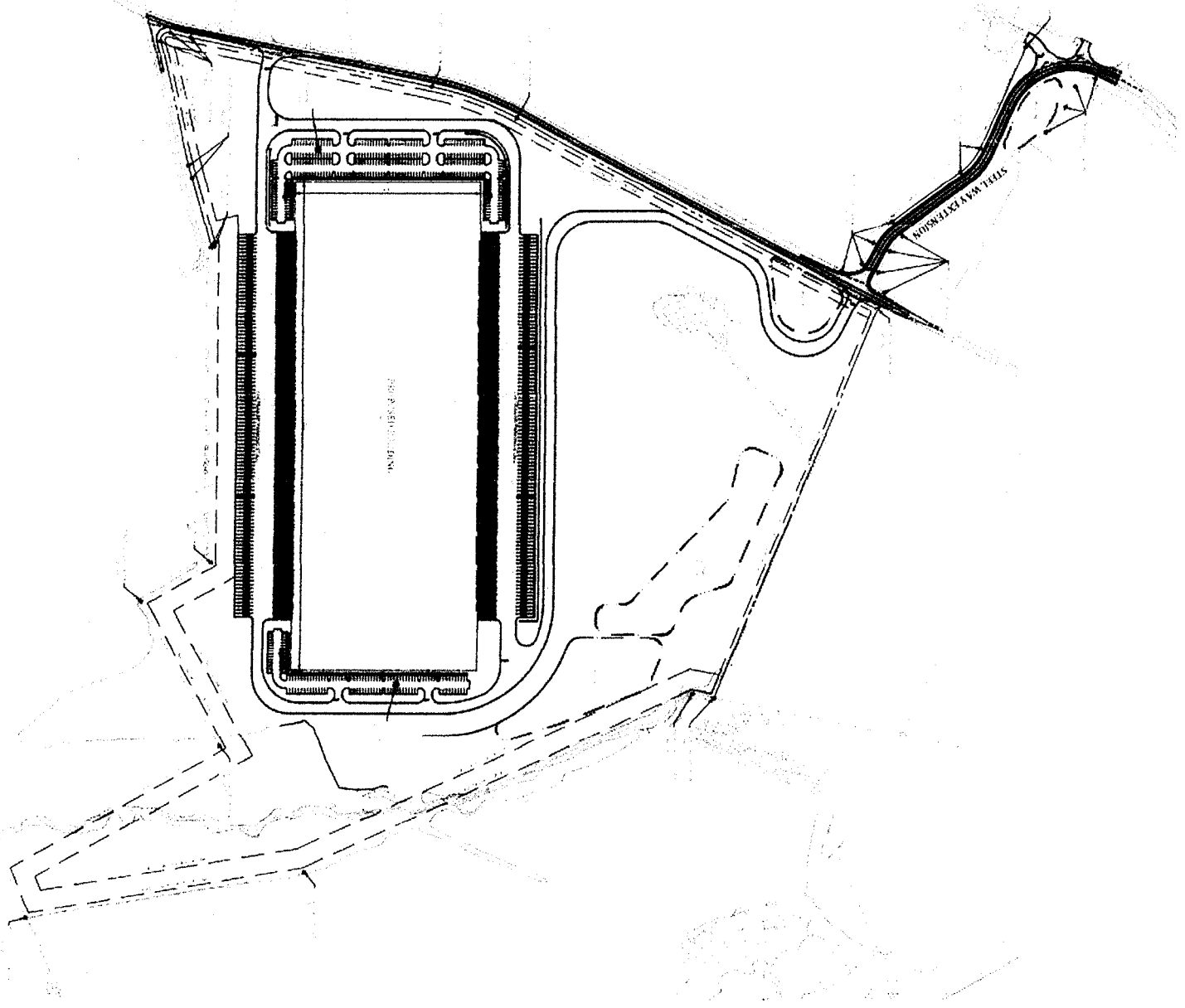
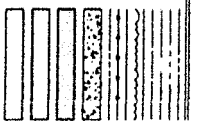




C-201	C-204		C-203
			C-202

C-305	C-304	C-303
C-301	C-302	

KEY MAP



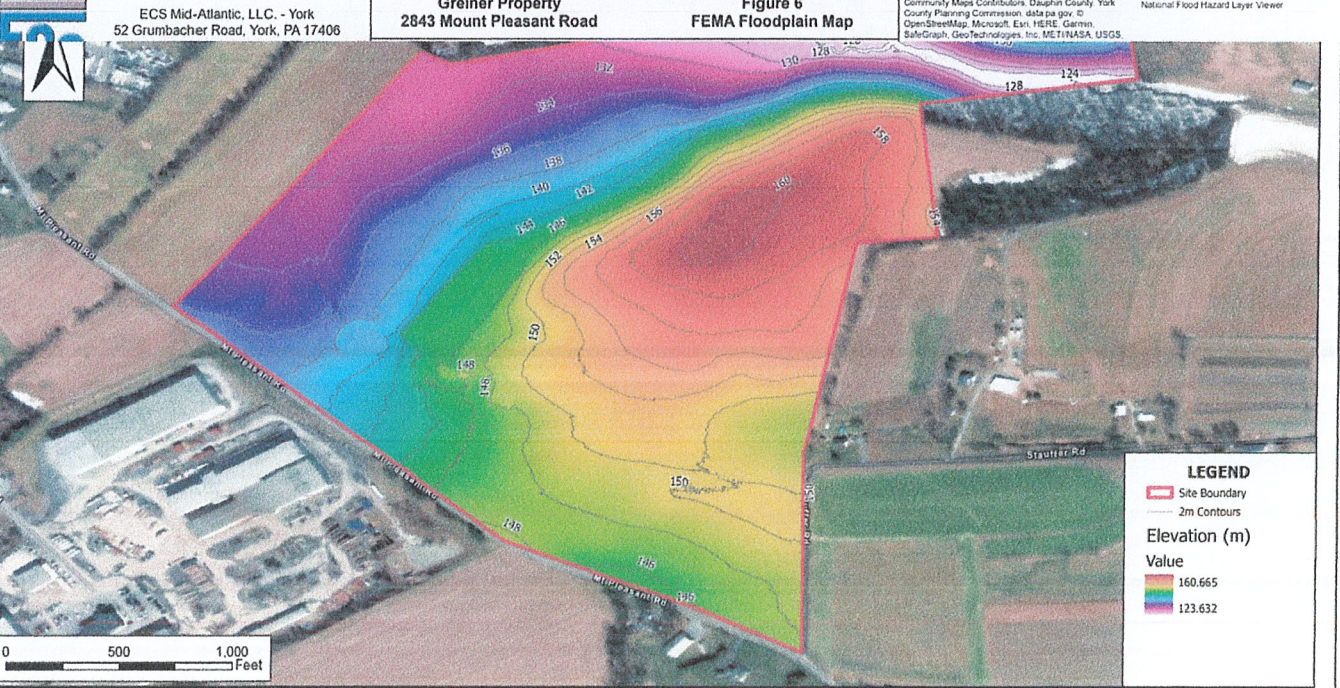
CADWORK 5-11-13



ECS Mid-Atlantic, LLC. - York Greiner Property 2843 Mount Pleasant Road Figure 5 National Wetlands Inventory Map Service Layer Credits: Hybrid Reference Layer: Esri Community Maps Contributors, Dauphin County, York County Planning Commission, data.pa.gov. Wetlands data obtained from National Wetland Inventory Mapper



ECS Mid-Atlantic, LLC. - York Greiner Property 2843 Mount Pleasant Road Figure 6 FEMA Floodplain Map Service Layer Credits: Hybrid Reference Layer: Esri Community Maps Contributors, Dauphin County, York County Planning Commission, data.pa.gov. Flood zone data obtained from the FEMA National Flood Hazard Layer Viewer



ECS Mid-Atlantic, LLC. - York Greiner Property 2843 Mount Pleasant Road Figure 7 LIDAR Map Service Layer Credits: Hybrid Reference Layer: Esri Community Maps Contributors, Dauphin County, York County Planning Commission, data.pa.gov. LIDAR data obtained from USGS Lidar Explorer

credit by reducing the volume and improving the quality of stormwater runoff. These areas are identified as "meadow" in all post-development calculations.

PEAK DISCHARGE RATE

The following tables summarize the pre-development and post-development peak discharge rates within each on-site watershed analyzed as part of the subject project. Given the size of the watershed areas involved, the analysis was conducted using the Soil-Cover-Complex Method (TR-20), the NOAA Type II rainfall distribution, and HydroCAD Version 10.0 methodologies for the 2, 5, 10, 25, 50 & 100-year storm events. The 24-hour storm duration precipitation depths used for stormwater management analysis were obtained from the National Oceanic and Atmospheric Administration (NOAA) website for the Mount Joy Township, PA station. A printout copy of this rainfall data can be found as a reference within Appendix C of this report.

In accordance with Mount Joy Township's Stormwater Management Ordinance for peak discharge rate calculations, all pre-development runoff curve numbers are based on actual land use assuming good land conditions. All offsite post-development runoff curve numbers are based on actual land use assuming poor land conditions.

Peak discharge rates for each watershed are summarized below.

Watershed Area #1 (DP 001)	Design Year Storm Event					
Discharge Rates: cubic feet per second (cfs)	2	5	10	25	50	100
Pre-Dev. discharge at POI:	11.32	17.41	22.97	31.68	39.49	48.35
Post-Dev. combined routed discharge at POI:	6.97	14.92	21.05	27.78	31.06	45.60
Net change in discharge at POI:	-4.35	-2.49	-1.92	-3.90	-8.43	-2.75

Watershed Area #2 (DP 002)	Design Year Storm Event					
Discharge Rates: cubic feet per second (cfs)	2	5	10	25	50	100
Pre-Dev. discharge at POI:	7.76	11.80	15.46	21.18	26.30	32.15
Post-Dev. combined routed discharge at POI:	2.60	5.28	7.98	12.51	16.81	21.90
Net change in discharge at POI:	-5.16	-6.52	-7.48	-8.67	-9.49	-10.25

Watershed Area #3 (DP 003)	Design Year Storm Event					
Discharge Rates: cubic feet per second (cfs)	2	5	10	25	50	100
Pre-Dev. discharge at POI:	29.53	44.62	58.49	80.44	100.25	122.88
Post-Dev. combined routed discharge at POI:	14.93	25.18	35.09	51.34	66.52	84.31
Net change in discharge at POI:	-14.60	-19.44	-23.40	-29.10	-33.73	-38.57

