

This drawing is the property of Independence Lighting and is issued to the recipient with the understanding that it shall not be copied, duplicated, passed on to unauthorized parties, nor used for any purpose other than that for which it is specifically furnished except with Independence Lighting's written permission.

Luminaire Schedule								
Symbol	Label	Qty	[MANUFAC]	Description	UDF	LLD	LDD	LLF
⊙	Type S3	82	SPRING CITY ELECTRICAL MANUFACTURING CO	VILLA-LE150 EVX L18-40-CR3-YS11-RME-XBP/RWL-S	3.000	0.900	0.800	2.160
⊙	Type S5	35	Spring City Electrical Manufacturing Co	VILLA-LE150 EVX L18-40-CN5-YS11-RME-XBP/RWL-S	3.000	0.900	0.800	2.160
⊙	Type S4 1498		Leotek Electronics USA LLC	AR13-48N-MV-NW-4-XX-200-WMB-PCR7-CR/RME-XBP/RWL-S	1.000	0.900	0.800	0.720

Numeric Summary							
Label	CalcType	Units	Avg	Max	Min	Avg/Min	Max/Min
Access Drive 1	Illuminance	Fc	1.47	3.2	0.6	2	5
Entire Calculation Grid	Illuminance	Fc	0.48	8.7	0.0	N.A.	N.A.
Norlanco Drive	Illuminance	Fc	1.84	4.3	0.7	3	6
Parking Area 153 Proposed Spaces	Illuminance	Fc	1.43	4.0	0.5	3	8
Parking Area 335 Proposed Spaces	Illuminance	Fc	1.25	4.0	0.4	3	10
Proposed Access Drive B	Illuminance	Fc	1.54	3.5	0.7	2	5
Proposed Access Drive C	Illuminance	Fc	1.61	3.9	0.8	2	5
Proposed Access Drive D	Illuminance	Fc	1.93	4.1	0.7	3	6

THIS LIGHTING PLAN DEPICTS PROPOSED SUSTAINED ILLUMINATION LEVELS CALCULATED USING DATA PROVIDED BY THE NOTED MANUFACTURERS.

ANY SUBSTITUTION REQUESTS MUST BE SUBMITTED 15 DAYS PRIOR TO THE BID AND MUST BE ACCOMPANIED BY A HORIZONTAL PHOTOMETRIC STUDY DEMONSTRATING THAT THE FIXTURES IN QUESTION WILL MEET THE DESIGN INTENT OF THIS PLAN.

ALL EXTERIOR LIGHTING PLANS SHALL BE SUBMITTED 15 DAYS PRIOR TO THE BID TO THE LOCAL LIGHTING AUTHORITY TO DETERMINE IF ALL OF THE LOCAL LIGHTING REQUIREMENTS HAVE BEEN MET.

INSTALLATION NOTES:

- 1.) THE CONTRACTOR SHALL BE RESPONSIBLE FOR THE FIELD VERIFICATION OF ALL EXISTING UNDERGROUND STRUCTURES AND UTILITIES, SUCH AS WATER MAINS, SANITARY AND STORM SEWERS, TELEPHONE AND ELECTRIC CONDUITS, AND GAS LINES, ETC. AND ABOVE GROUND UTILITIES WHICH MAY BE ENCOUNTERED DURING CONSTRUCTION OPERATIONS.
- 2.) DIMENSIONS ARE APPROXIMATE. THE CONTRACTOR SHALL BE RESPONSIBLE TO VERIFY ALL ELEVATIONS, INVERTS, AND DIMENSIONS IN THE FIELD PRIOR TO THE COMMENCEMENT OF WORK.
- 3.) THE PENNSYLVANIA ONE CALL NUMBER IS 1-800-242-1776. THE CONTRACTOR IS REQUIRED TO SUBMIT VERIFICATION TO THE MUNICIPALITY THAT A ONE "ONE-CALL" HAS BEEN PLACED PRIOR TO THE START OF DEMOLITION WORK.
- 4.) THE CONTRACTOR SHALL BE RESPONSIBLE FOR OBTAINING ALL PERMITS FROM THE MUNICIPALITY RELATIVE TO THE PROPOSED PROJECT.
- 5.) THE CONTRACTOR SHALL REPAIR ALL UTILITY TRENCHING WORK LOCATED WITHIN EXISTING PAVED STREETS.
- 6.) THE CONTRACTOR SHALL COMPLY WITH ALL CITY, STATE, AND FEDERAL REGULATIONS IN EFFECT AT THE TIME OF CONSTRUCTION.
- 7.) THE CONTRACTOR SHALL BE RESPONSIBLE FOR ALL TRAFFIC CONTROL.
- 8.) THE CONTRACTOR SHALL REMOVE ALL TEMPORARY FENCING, GATES, COVERED PEDESTRIAN WALKWAYS, TRAFFIC BARRIERS, AND SIGNAGE AT THE COMPLETION OF THE PROJECT. ALL AREAS DISTURBED AS A RESULT OF THE INSTALLATION OF THESE TEMPORARY CONTROLS SHALL BE RESTORED TO THEIR ORIGINAL CONDITION.
- 9.) THE LIGHT LEVELS DEPICTED ON THIS PLAN WERE CALCULATED BASED ON THE LLF SHOWN IN THE LUMINAIRE SCHEDULE.
- 10.) THE LIGHTING VALUES AND CALCULATION POINTS DEPICTED ON THIS PLAN ARE ANALYZED ON A HORIZONTAL GEOMETRIC PLANE AT GROUND LEVEL UNLESS OTHERWISE NOTED.
- 11.) ILLUMINATION LEVELS ARE SHOWN IN FOOT-CANDLES (FC).
- 12.) THE ELECTRICAL CONTRACTOR IS RESPONSIBLE TO ENSURE THAT SHIELDING AND OR ROTATED OPTICS ARE INSTALLED AS INDICATED ON THE PLAN IN ORDER TO ACHIEVE THE LIGHTING LEVELS THE REVIEWING AGENCY APPROVED.

<p><b>Penmark Shopping Center</b>  <b>Mount Joy, Township PA</b>  <b>Site Lighting Calculations</b></p>	<p><b>Independence Lighting</b>                  256 Eagleview Blvd Suite 211                  Exton, Pennsylvania 19335                  Voice Number : 610 363 5271                  klazor@comcast.net</p>
---	---

*Independence Lighting* Established 2005

This drawing is the property of Independence Lighting and is issued to the recipient with the understanding that it shall not be copied, duplicated, passed on to unauthorized parties, nor used for any purpose other than that for which it is specifically furnished except with Independence Lighting's written permission.

LIGHTING CONTROLS AND SURGE PROTECTION: ALL NEW FIXTURES ARE TO BE EQUIPPED WITH DIMONOFF RME-XBP PHOTOCELLS AND ABLE POWER PRODUCTS RWL-S SURGE DEVICE. FIXTURES MUST BE EQUIPPED WITH ALL-MODE PROTECTION (L-N, L-G, N-G). SURGE PROTECTION INTEGRAL TO THE PHOTOCONTROL SHOULD HAVE 3 MODES OF PROTECTION, LINE-TO-NEUTRAL, LINE-TO-GROUND AND NEUTRAL-TO-GROUND. THE MINIMUM SURGE PROTECTION SPECIFICATIONS SHOULD BE 10KA IN, 25KA IMAX AND 20KV UOC.

SET ONE SMART PHOTOCELL TO CONTROL ALL OTHER SITE LIGHTING FIXTURES (DIMONOFF #RME-XBP).

POLE NOTES:

POLES SHALL BE SUPPLIED BY TERRACAST PRODUCTS.

SET ONE SMART PHOTOCELL TO CONTROL ALL OTHER SITE LIGHTING FIXTURES (DIMONOFF #RME-XBP).

FOR PRICING AND COMMISSIONING, PLEASE CONTACT KENT LAZOR:

INDEPENDENCE LIGHTING  
KENT LAZOR  
PHONE: 610-363-5271  
EMAIL: KLAZOR@COMCAST.NET

Pennmark Shopping Center  
Mount Joy, Township PA  
Site Lighting Calculations

Independence Lighting  
256 Eagleview Blvd Suite 211  
Exton, Pennsylvania 19335  
Voice Number : 610 363 5271  
klazor@comcast.net

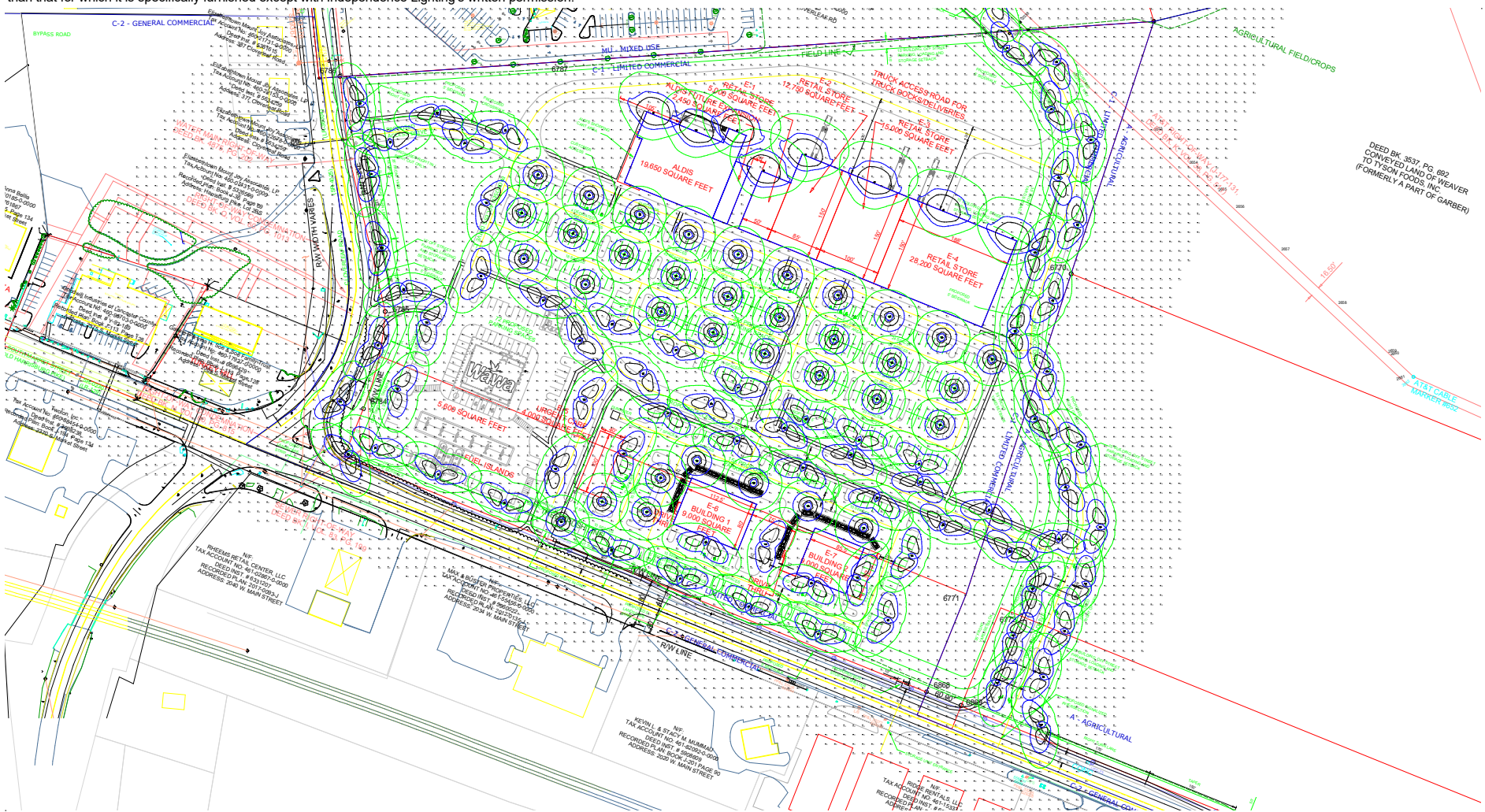
*Independence Lighting* Established 2005

Date:4/5/2023

Page 2 of 10

Operator: K.J.L.

This drawing is the property of Independence Lighting and is issued to the recipient with the understanding that it shall not be copied, duplicated, passed on to unauthorized parties, nor used for any purpose other than that for which it is specifically furnished except with Independence Lighting's written permission.

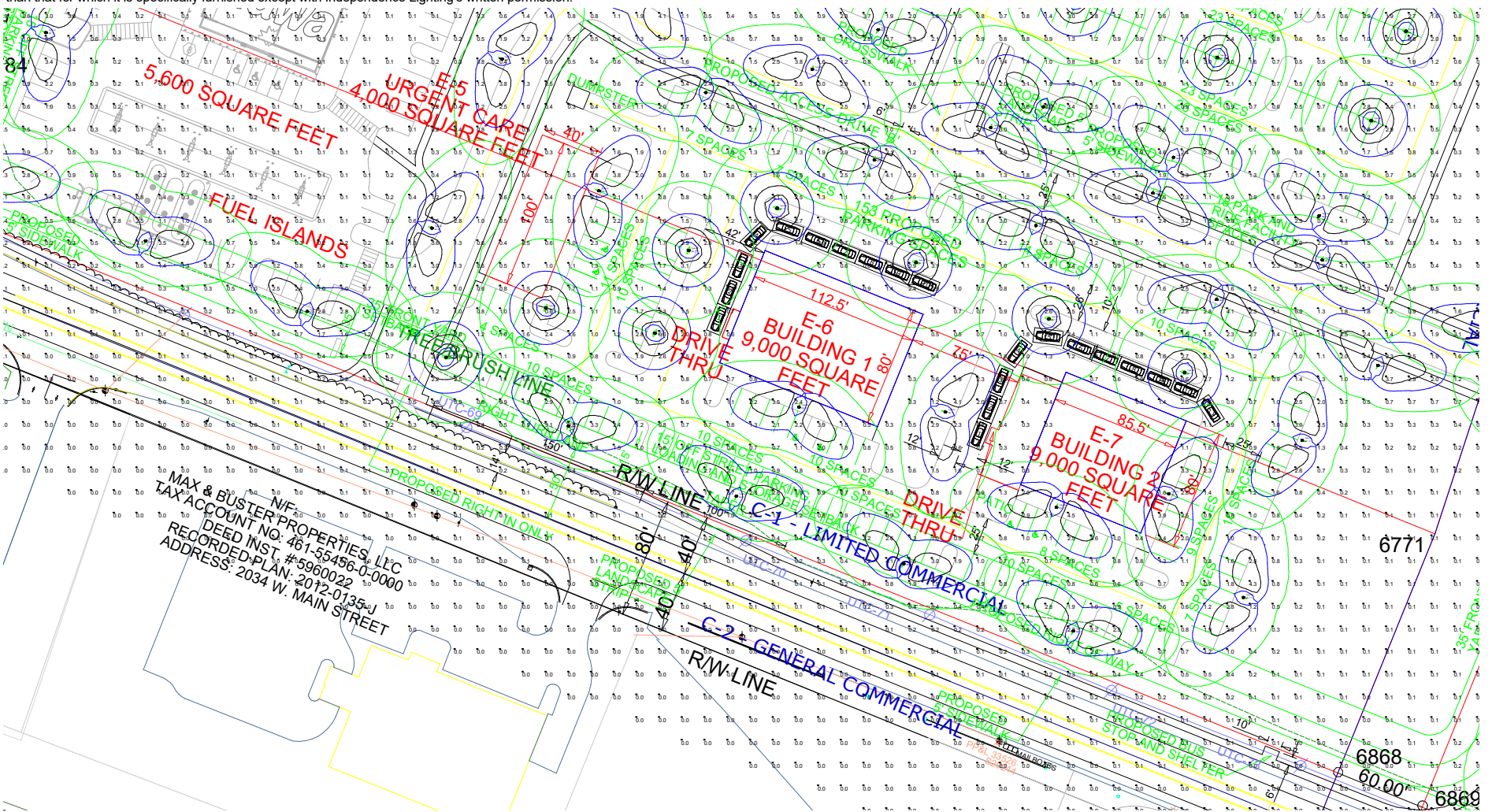


Entire Site  
Not to Scale

<p><b>Penmark Shopping Center</b>  <b>Mount Joy, Township PA</b>  <b>Site Lighting Calculations</b></p>	<p><b>Independence Lighting</b>                  256 Eagleview Blvd Suite 211                  Exton, Pennsylvania 19335                  Voice Number : 610 363 5271                  klazor@comcast.net</p>
---	---

*Independence Lighting* Established 2005

This drawing is the property of Independence Lighting and is issued to the recipient with the understanding that it shall not be copied, duplicated, passed on to unauthorized parties, nor used for any purpose other than that for which it is specifically furnished except with Independence Lighting's written permission.

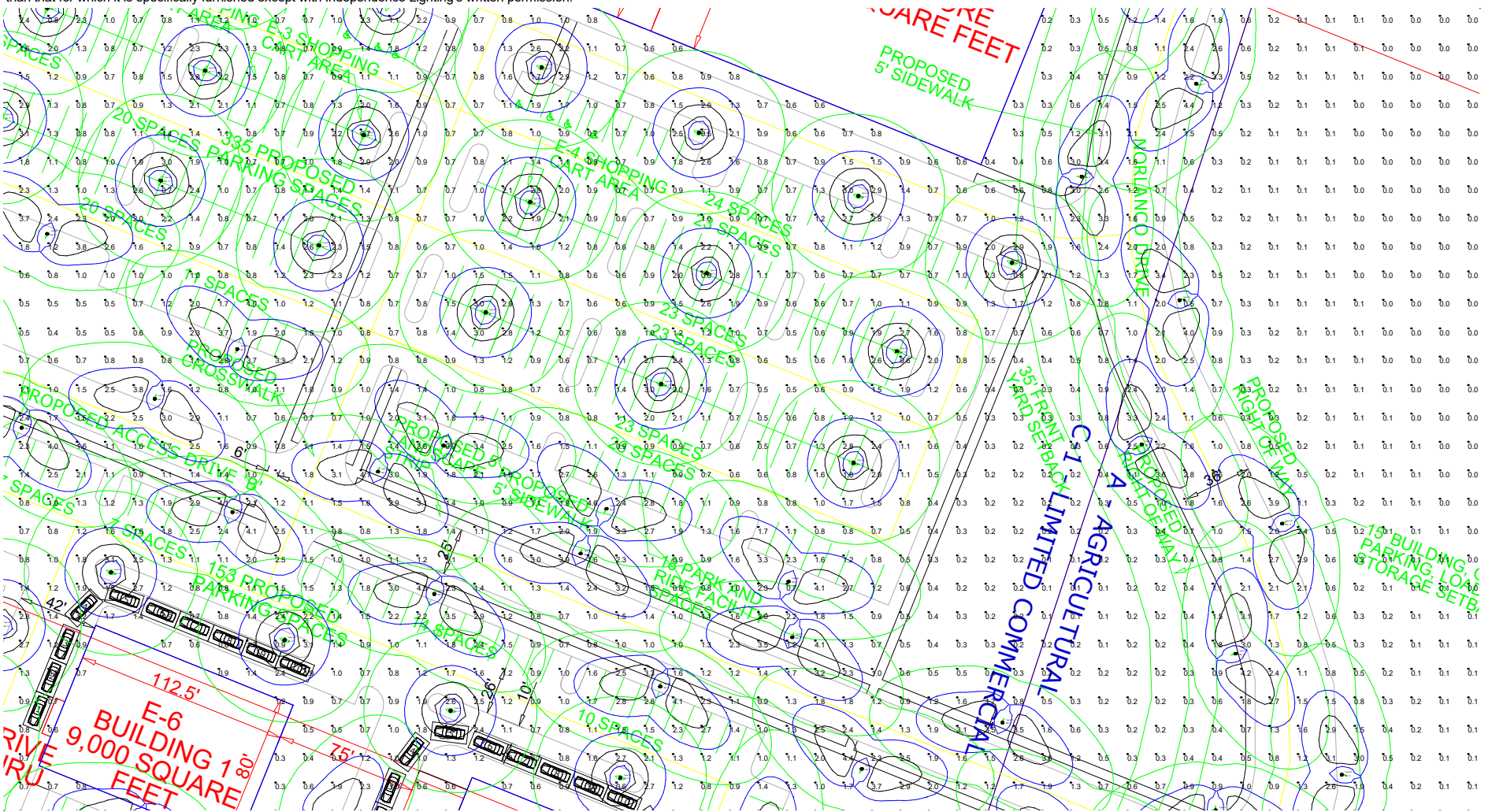


153 Proposed Parking Spaces  
Not to Scale

<p><b>Penmark Shopping Center</b>          Mount Joy, Township PA          Site Lighting Calculations</p>	<p><b>Independence Lighting</b>          256 Eagleview Blvd Suite 211          Exton, Pennsylvania 19335          Voice Number : 610 363 5271          klazor@comcast.net</p>
---	---

*Independence Lighting* Established 2005

This drawing is the property of Independence Lighting and is issued to the recipient with the understanding that it shall not be copied, duplicated, passed on to unauthorized parties, nor used for any purpose other than that for which it is specifically furnished except with Independence Lighting's written permission.



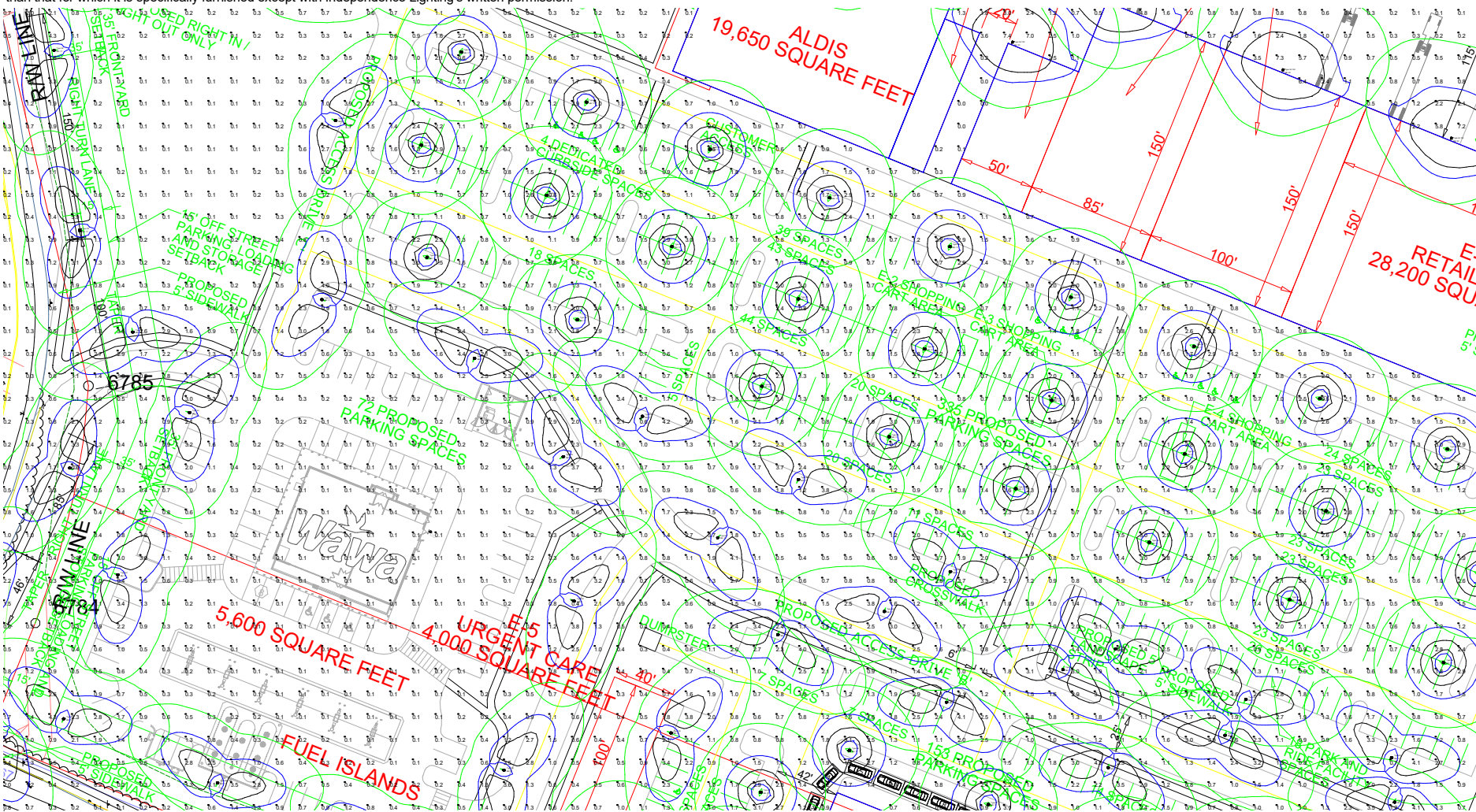
335 Proposed Parking Spaces East  
Not to Scale

Penmark Shopping Center  
Mount Joy, Township PA  
Site Lighting Calculations

Independence Lighting  
256 Eagleview Blvd Suite 211  
Exton, Pennsylvania 19335  
Voice Number : 610 363 5271  
klazor@comcast.net

*Independence Lighting* Established 2005

This drawing is the property of Independence Lighting and is issued to the recipient with the understanding that it shall not be copied, duplicated, passed on to unauthorized parties, nor used for any purpose other than that for which it is specifically furnished except with Independence Lighting's written permission.

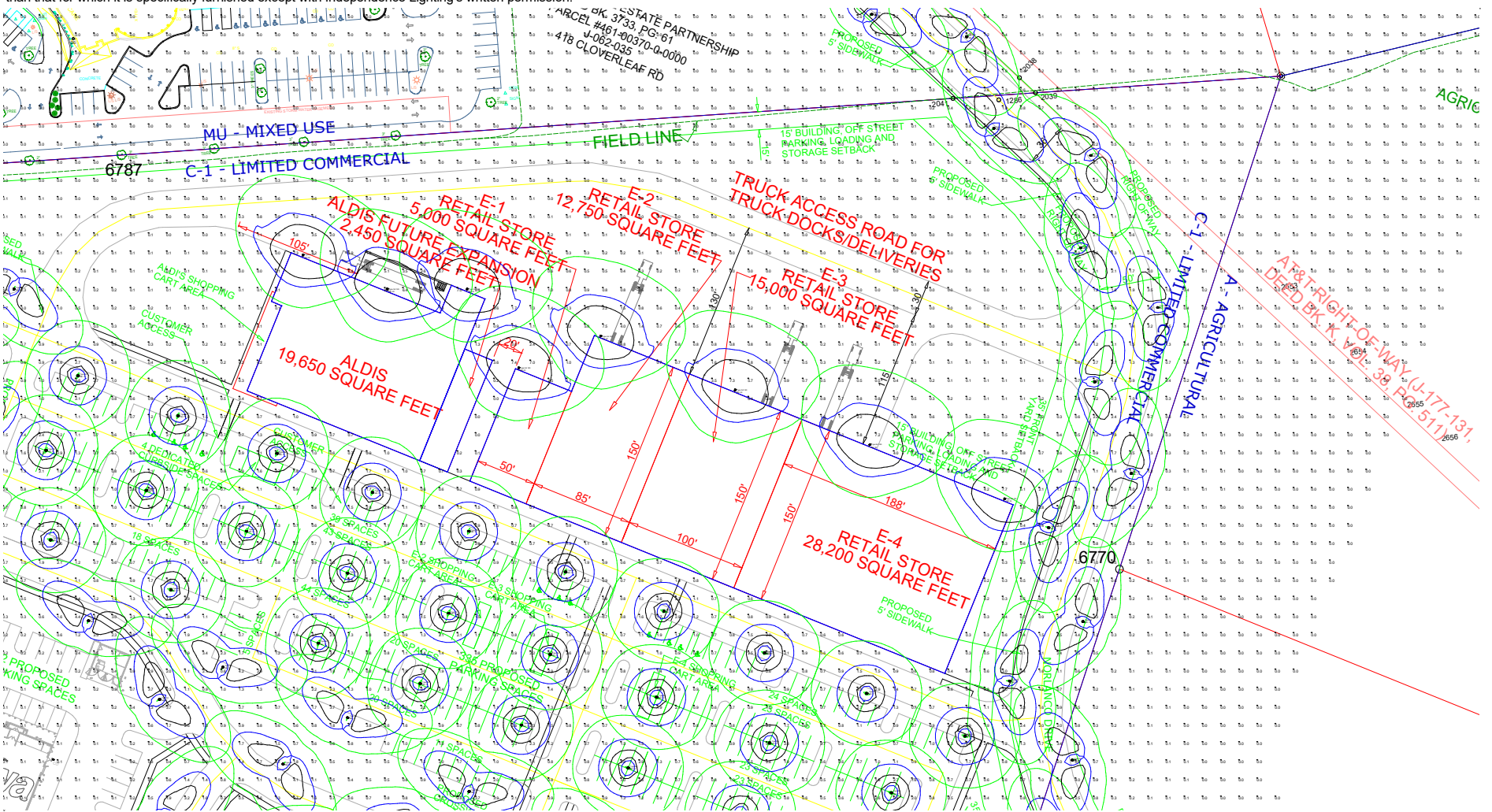


335 Proposed Parking Spaces West  
Not to Scale

<p>Penmark Shopping Center Mount Joy, Township PA Site Lighting Calculations</p>	<p>Independence Lighting 256 Eagleview Blvd Suite 211 Exton, Pennsylvania 19335 Voice Number : 610 363 5271 klazor@comcast.net</p>
--	--

*Independence Lighting* Established 2005

This drawing is the property of Independence Lighting and is issued to the recipient with the understanding that it shall not be copied, duplicated, passed on to unauthorized parties, nor used for any purpose other than that for which it is specifically furnished except with Independence Lighting's written permission.

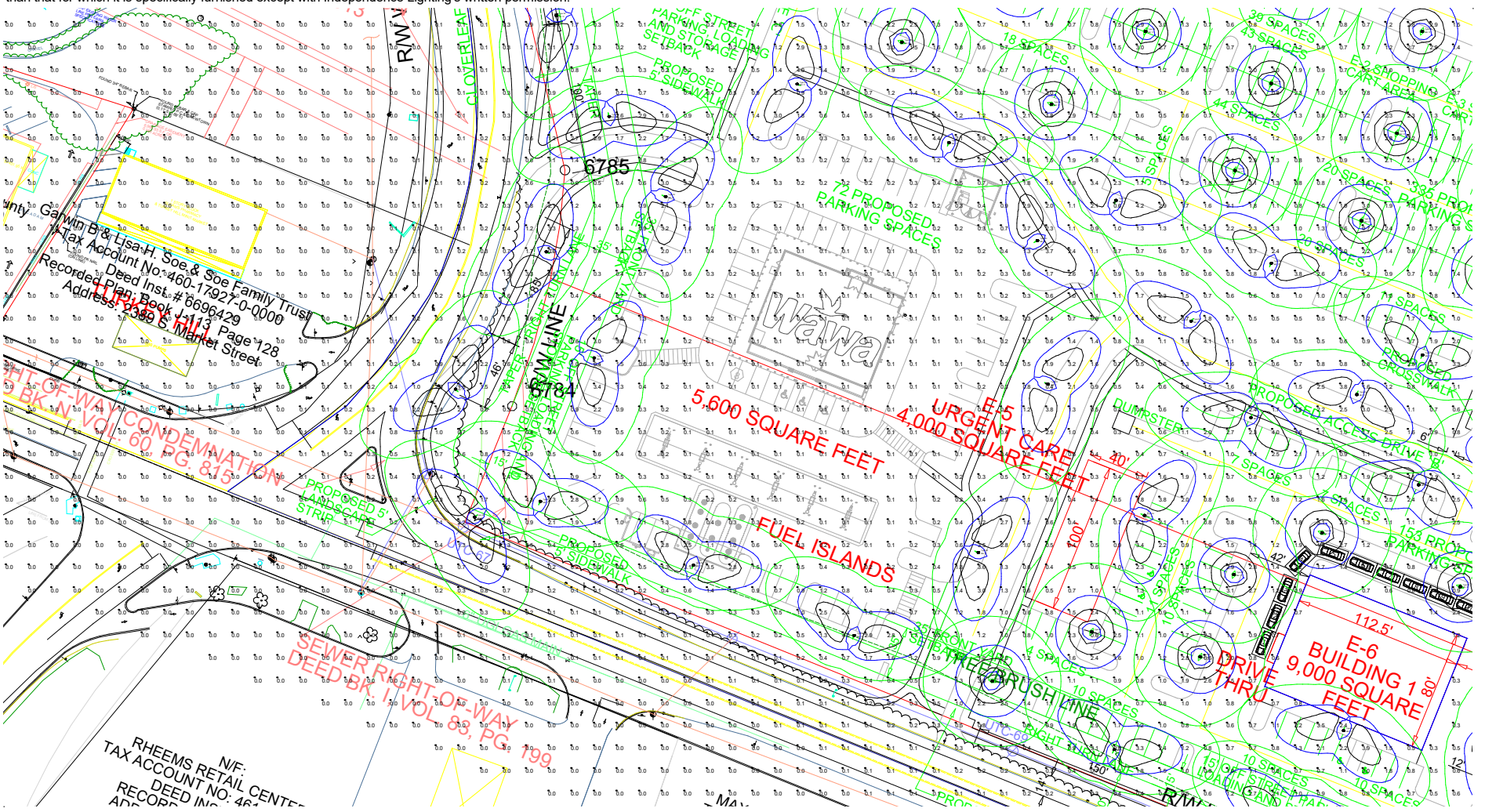


Rear Site Lighting  
Not to Scale

<p><b>Penmark Shopping Center</b> Mount Joy, Township PA Site Lighting Calculations</p>	<p><b>Independence Lighting</b> 256 Eagleview Blvd Suite 211 Exton, Pennsylvania 19335 Voice Number : 610 363 5271 klazor@comcast.net</p>
---	---

*Independence Lighting* Established 2005

This drawing is the property of Independence Lighting and is issued to the recipient with the understanding that it shall not be copied, duplicated, passed on to unauthorized parties, nor used for any purpose other than that for which it is specifically furnished except with Independence Lighting's written permission.



Wawa Parking Lot  
Not to Scale

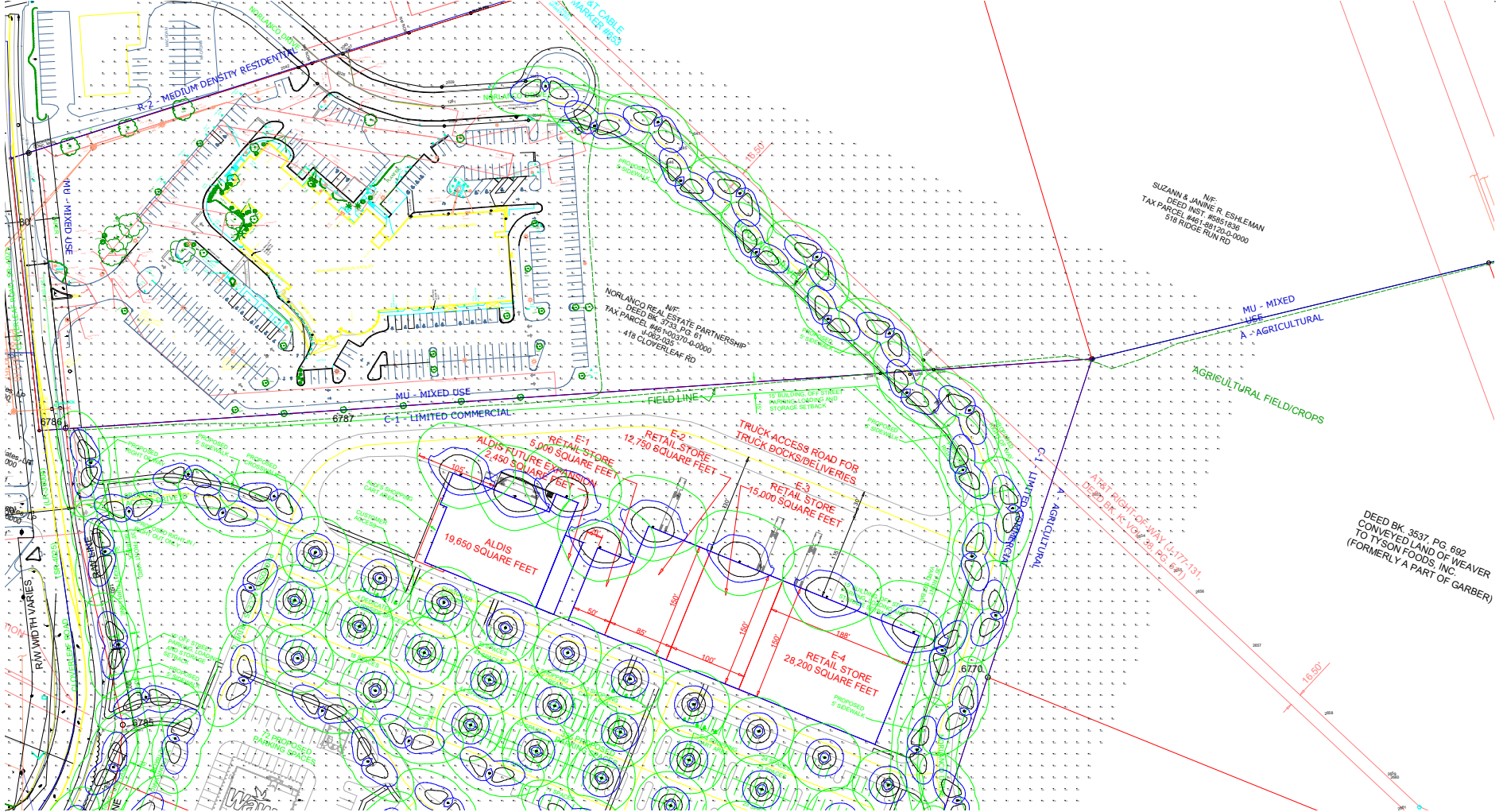
Penmark Shopping Center  
Mount Joy, Township PA  
Site Lighting Calculations

Independence Lighting  
256 Eagleview Blvd Suite 211  
Exton, Pennsylvania 19335  
Voice Number : 610 363 5271  
klazor@comcast.net

*Independence Lighting* Established 2005



This drawing is the property of Independence Lighting and is issued to the recipient with the understanding that it shall not be copied, duplicated, passed on to unauthorized parties, nor used for any purpose other than that for which it is specifically furnished except with Independence Lighting's written permission.



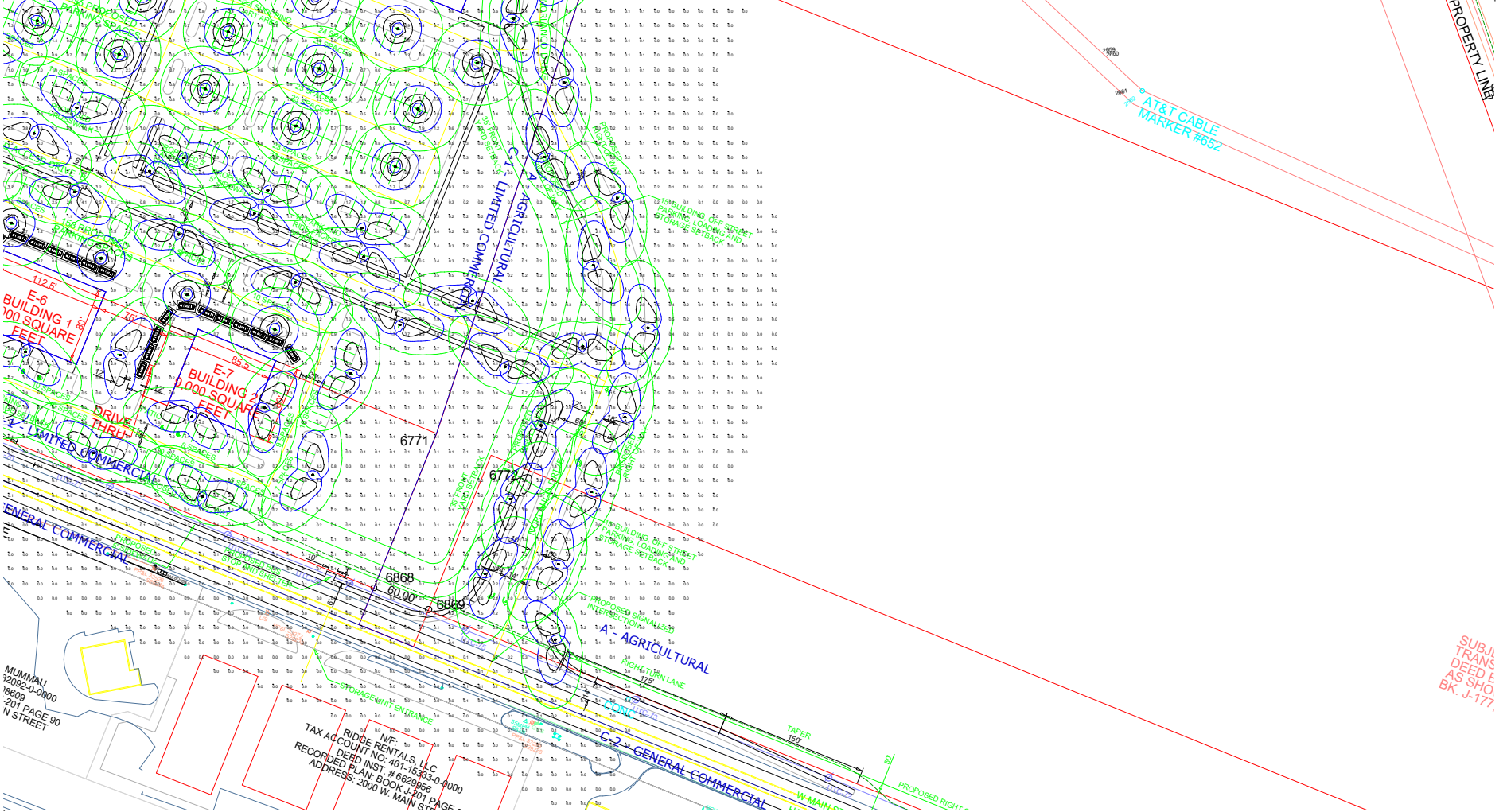
Norlanco Drive North  
Not to Scale

**Penmark Shopping Center**  
**Mount Joy, Township PA**  
**Site Lighting Calculations**

**Independence Lighting**  
 256 Eagleview Blvd Suite 211  
 Exton, Pennsylvania 19335  
 Voice Number : 610 363 5271  
 klazor@comcast.net

*Independence Lighting* Established 2005

This drawing is the property of Independence Lighting and is issued to the recipient with the understanding that it shall not be copied, duplicated, passed on to unauthorized parties, nor used for any purpose other than that for which it is specifically furnished except with Independence Lighting's written permission.



Norlanco Drive South  
Not to Scale

<p><b>Penmark Shopping Center</b>  <b>Mount Joy, Township PA</b>  <b>Site Lighting Calculations</b></p>	<p><b>Independence Lighting</b>                  256 Eagleview Blvd Suite 211                  Exton, Pennsylvania 19335                  Voice Number : 610 363 5271                  klazor@comcast.net</p>
---	---

*Independence Lighting* Established 2005