

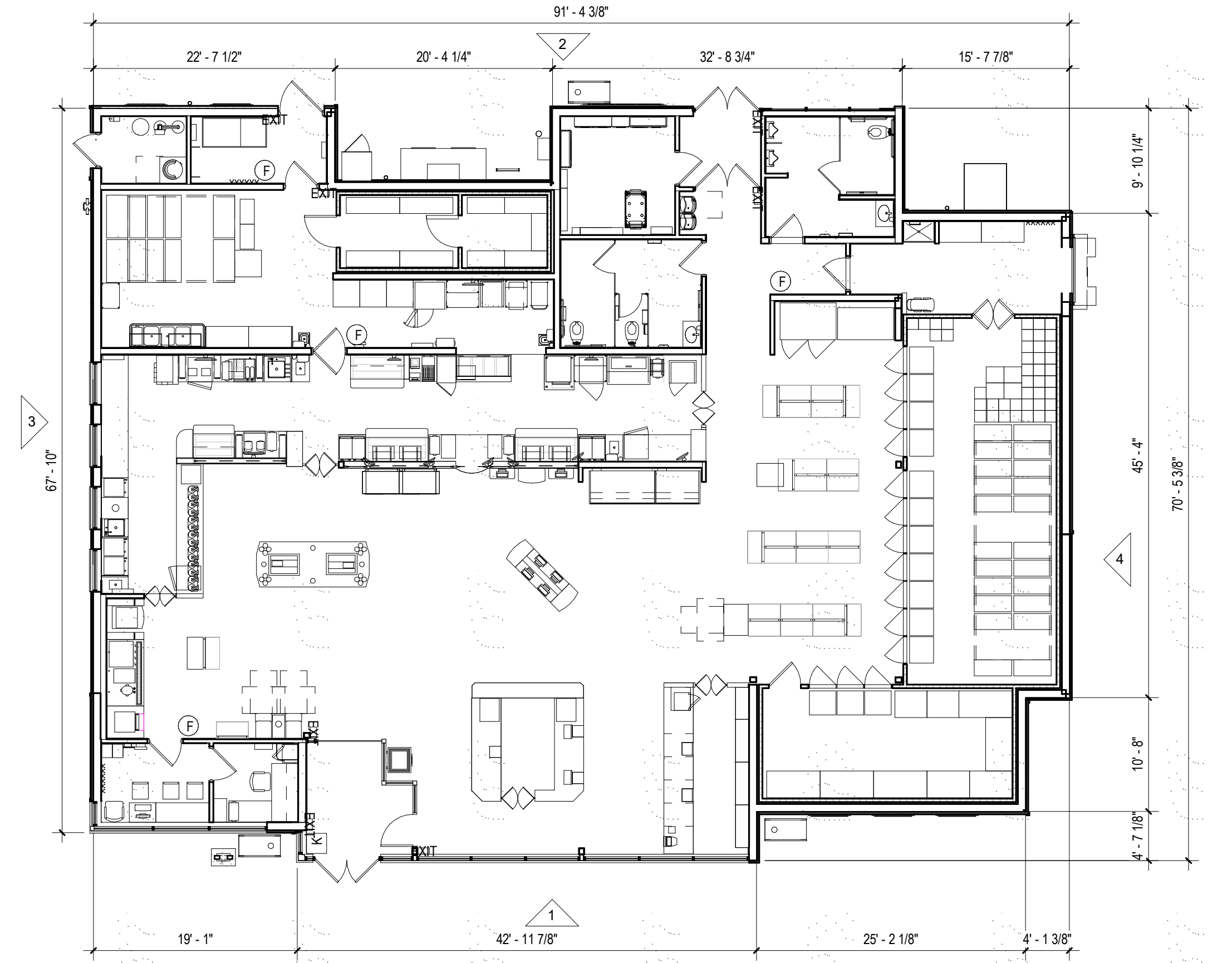


① FRONT ELEVATION
3/16" = 1'-0"

GLAZING CALCS - FRONT ELEVATION:
 CLEAR GLAZING - 462 SQFT
 SPANDREL GLASS - 77 SQFT
 TOTAL - 541 SQFT

**TOTAL BUILDING - 1,753 SQFT
 GLAZING - 541/1,753 = 31%**

MATERIAL CALCS - FRONT ELEVATION:
 BRICK - 301 SQFT
 COMPOSITE - 383 SQFT
 STUCCO/EIFS - 446 SQFT
 TILE - 82 SQFT
 TOTAL - 1,212 SQFT



⑤ FLOOR PLAN
1" = 10'-0"

MATERIALS:



EXTERIOR FINISH PACKAGE: BRICK-1



② REAR ELEVATION
3/16" = 1'-0"

GLAZING CALCS - REAR ELEVATION:
 CLEAR GLAZING - 68 SQFT
 SPANDREL GLASS - 136 SQFT
 TOTAL - 204 SQFT

**TOTAL BUILDING - 1,712 SQFT
 GLAZING - 204/1,712 = 30%**

MATERIAL CALCS - REAR ELEVATION:
 BRICK - 576 SQFT
 COMPOSITE - 543 SQFT
 STUCCO/EIFS - 320 SQFT
 TILE - 69 SQFT - 5%
 TOTAL - 1,508 SQFT

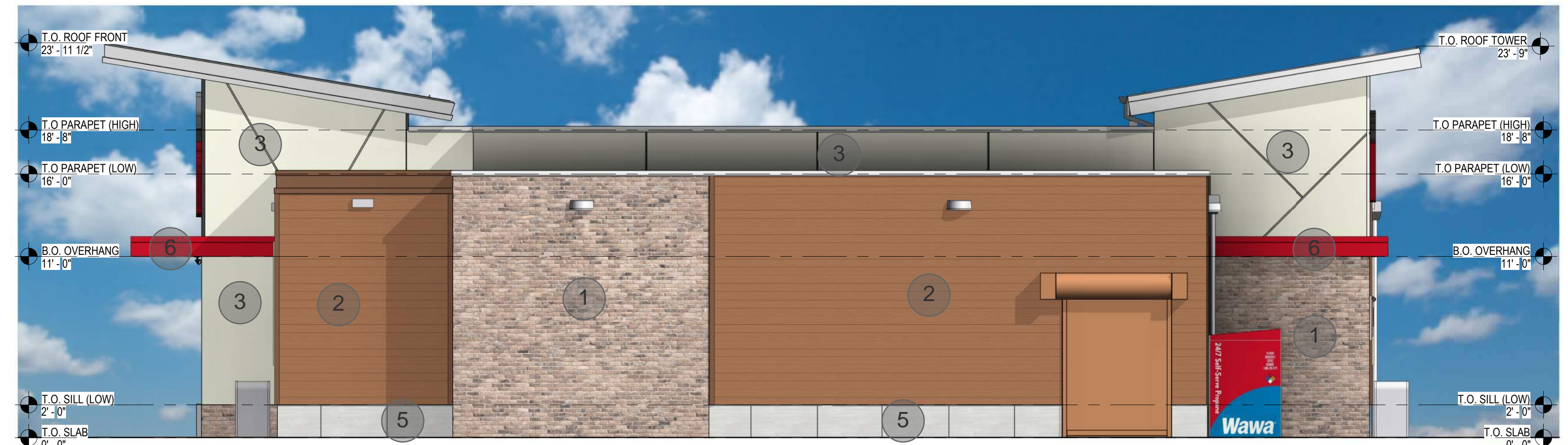


③ SIDE ELEVATION
3/16" = 1'-0"

GLAZING CALCS - SIDE ELEVATION:
 CLEAR GLAZING - 110 SQFT
 SPANDREL GLASS - 46 SQFT
 TOTAL - 156 SQFT

**TOTAL BUILDING - 1,337 SQFT
 GLAZING - 300/1,337 = 22%**

MATERIAL CALCS - SIDE ELEVATION:
 BRICK - 806 SQFT
 COMPOSITE - 224 SQFT
 STUCCO/EIFS - 88 SQFT
 TILE - 63 SQFT
 TOTAL - 1,181 SQFT



④ SIDE ELEVATION
3/16" = 1'-0"

MATERIAL CALCS - SIDE ELEVATION:
 BRICK - 363 SQFT
 COMPOSITE - 552 SQFT
 STUCCO/EIFS - 334 SQFT
 TILE - 87 SQFT
 TOTAL - 1,336 SQFT