

DATE	NO.	REVISIONS	BY

GREINER DEVELOPMENT PROJECT
 2843 MOUNT PLEASANT ROAD
 MOUNT JOY, PENNSYLVANIA
GRADING & DRAINAGE PLAN

FRANKLIN B. GREINER, JR.
 2843 MOUNT PLEASANT ROAD
 MOUNT JOY, PENNSYLVANIA 17552

ALL DIMENSIONS MUST BE VERIFIED BY CONTRACTOR AND OWNER MUST BE NOTIFIED OF ANY DISCREPANCIES BEFORE PROCEEDING WITH WORK

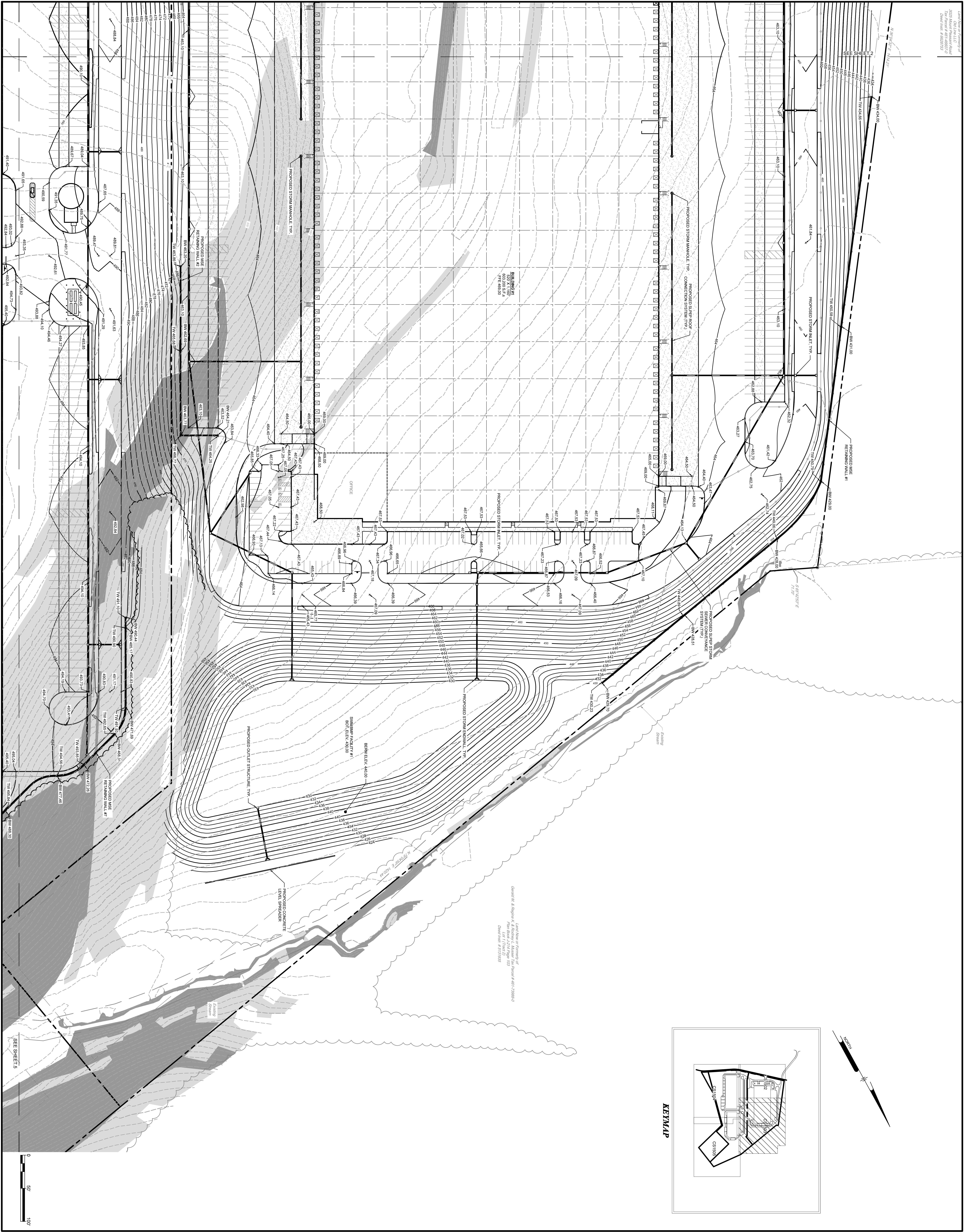
Pennoni

PENNONI ASSOCIATES INC.
 5072 Ritter Road, Suite 102
 Mechanicsburg, PA 17055
 T 717.975.6481 F 717.975.6480

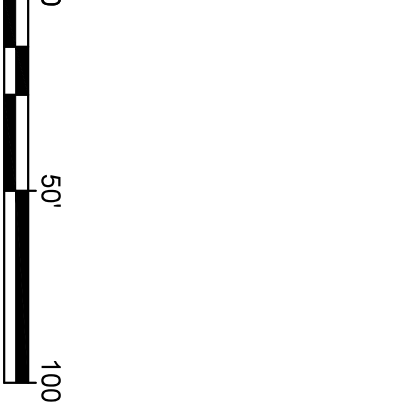
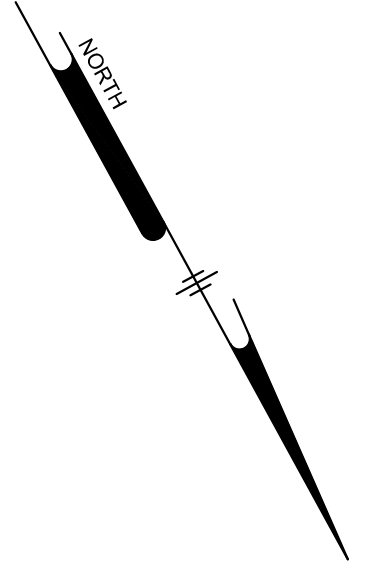
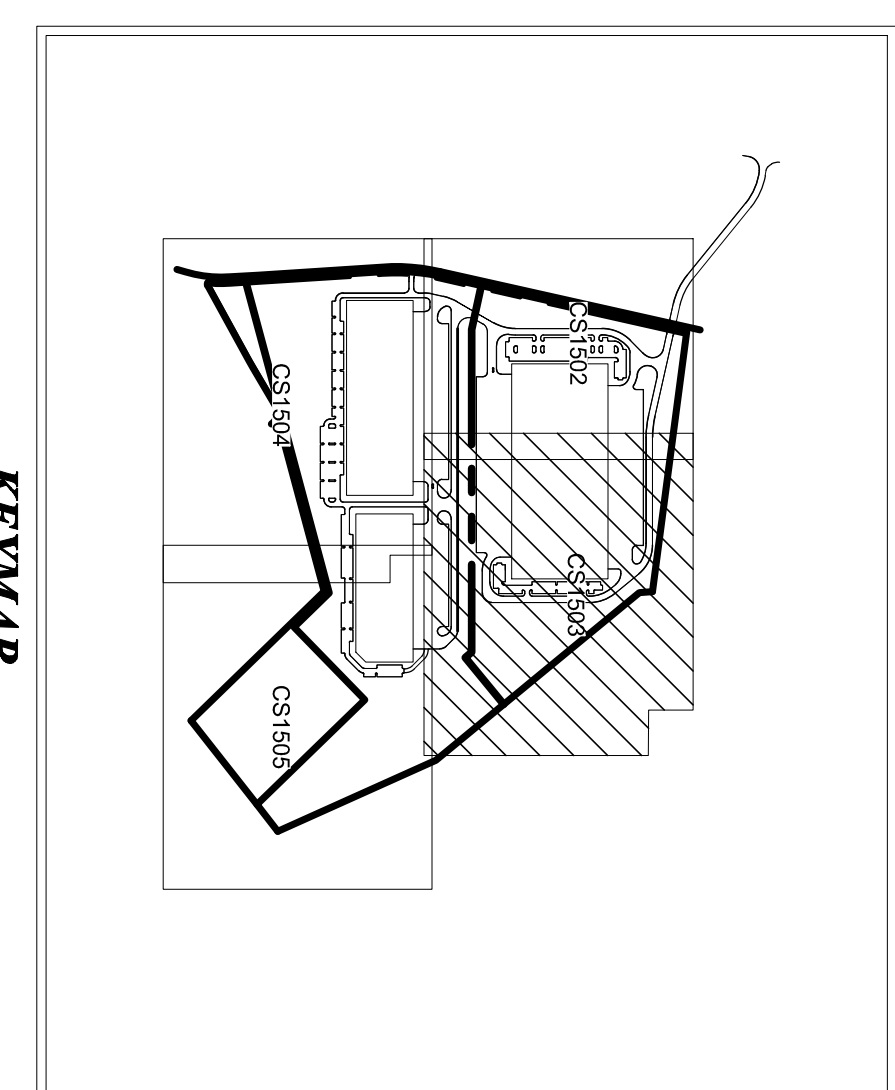
CS1502
 SHEET 2 OF 5

DATE: 2008-11-14
 DRAWING SCALE: 1" = 50'
 DRAWN BY: TLR
 APPROVED BY: JDB

PROJECT: ETHDE25003



Greiner B. & Associates, Inc.
 2843 Mount Pleasant Road
 Mount Joy, PA 17552
 Date: 03/22/2025
 Drawing No: 2503



DATE	NO.	REVISIONS	BY

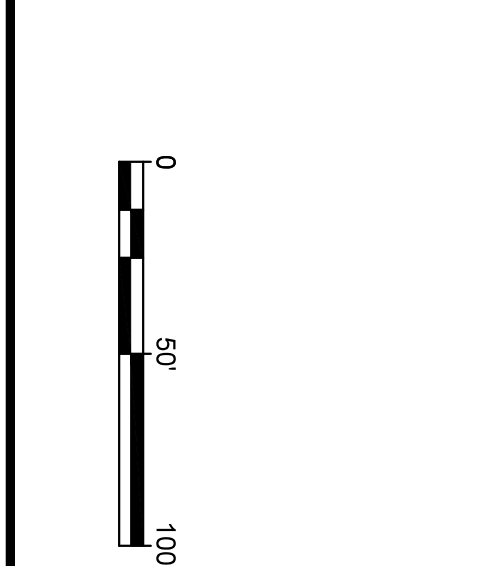
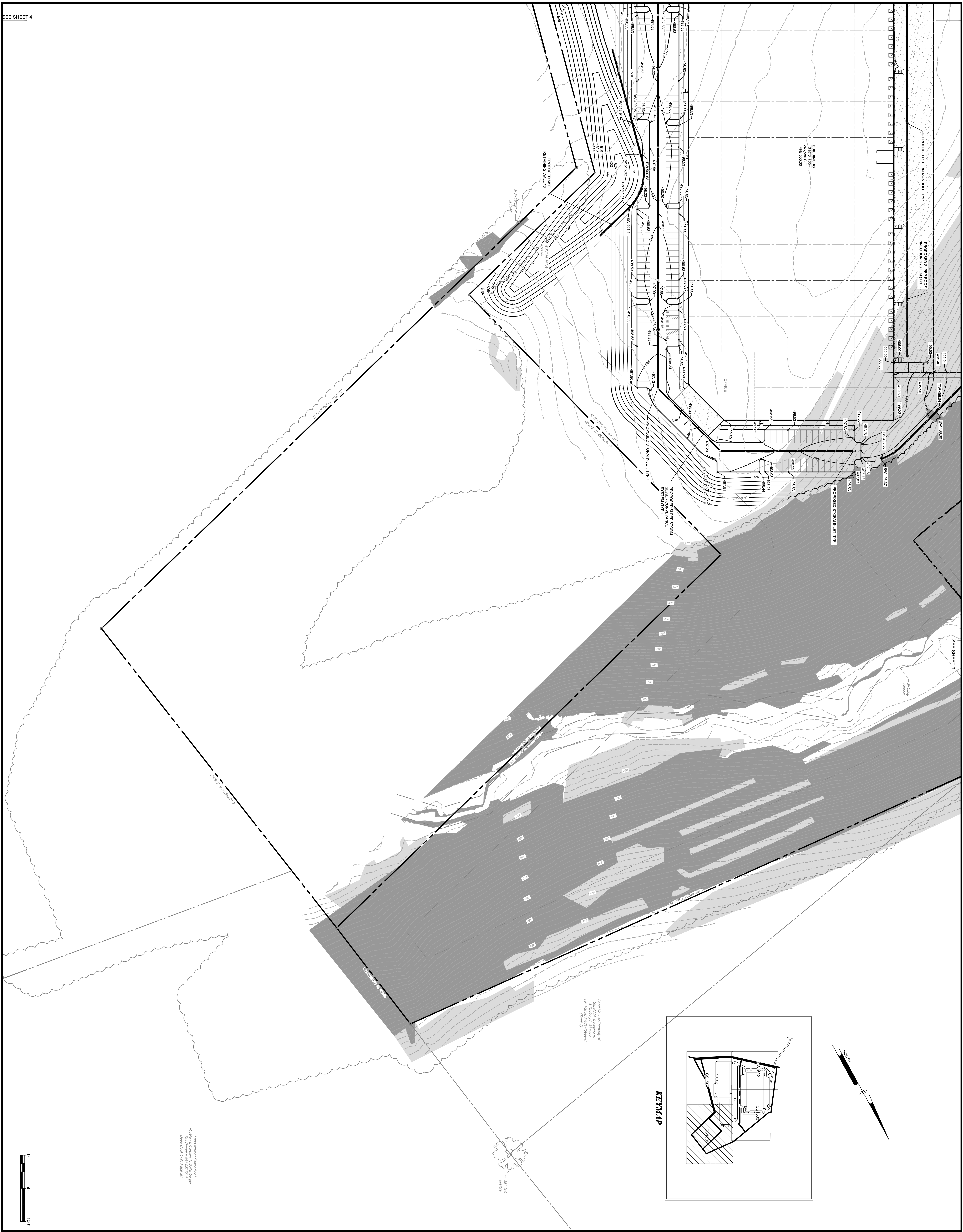
GREINER DEVELOPMENT PROJECT
 2843 MOUNT PLEASANT ROAD
 MOUNT JOY, PENNSYLVANIA
SITE PLAN
 FRANKLIN B. GREINER, JR.
 2843 MOUNT PLEASANT ROAD
 MOUNT JOY, PENNSYLVANIA 17552

ALL DIMENSIONS MUST BE VERIFIED BY CONTRACTOR AND OWNER MUST BE NOTIFIED OF ANY DISCREPANCIES BEFORE PROCEEDING WITH WORK

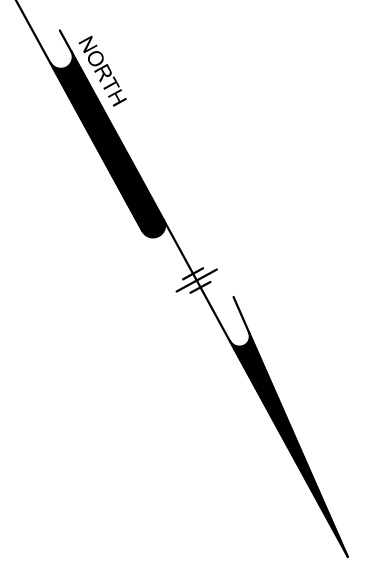
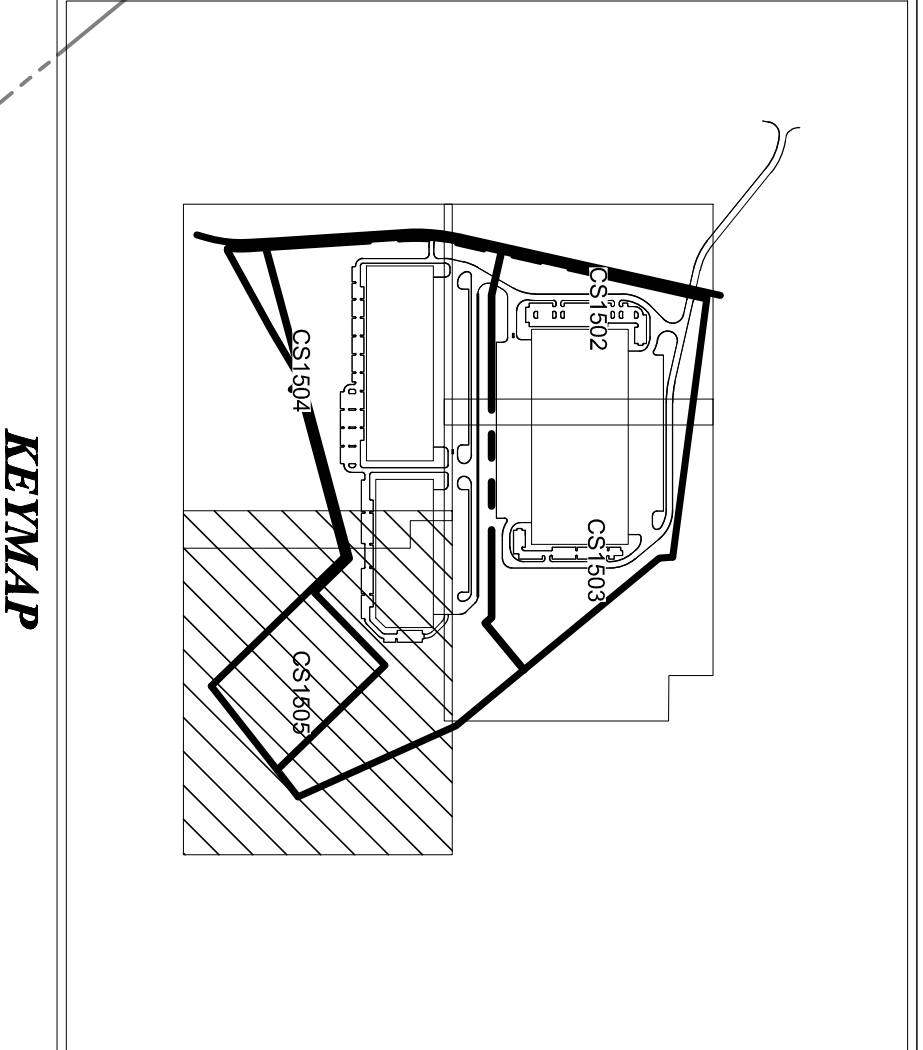
PENNONI ASSOCIATES INC.
 5072 Ritter Road, Suite 102
 Mechanicsburg, PA 17055
 T 717.975.6481 F 717.975.6480

CS1503
 SHEET 3 OF 5

SEE SHEET 4



LAND MAP OF PENNSYLVANIA
 P. AMOS & COMPANY, P. ENGINEERS
 2843 MOUNT PLEASANT ROAD
 MOUNT JOY, PA 17055



DATE	2005-11-14
PROJECT	ETHDE25003
DRAWING SCALE	1" = 50'
DRAWN BY	TJR
APPROVED BY	JDH

DATE	NO.	REVISIONS	BY

GREINER DEVELOPMENT PROJECT
 2843 MOUNT PLEASANT ROAD
 MOUNT JOY, PENNSYLVANIA
GRADING & DRAINAGE PLAN

 FRANKLIN B. GREINER, JR.
 2843 MOUNT PLEASANT ROAD
 MOUNT JOY, PENNSYLVANIA 17052

ALL DIMENSIONS MUST BE VERIFIED BY CONTRACTOR
 AND OWNER MUST BE NOTIFIED OF ANY
 DISCREPANCIES BEFORE PROCEEDING WITH WORK

PENNONI ASSOCIATES INC.
 5072 Ritter Road, Suite 102
 Mechanicsburg, PA 17055
 T 717.975.6481 F 717.975.6480

SHEET
CS1505
 5 OF 5